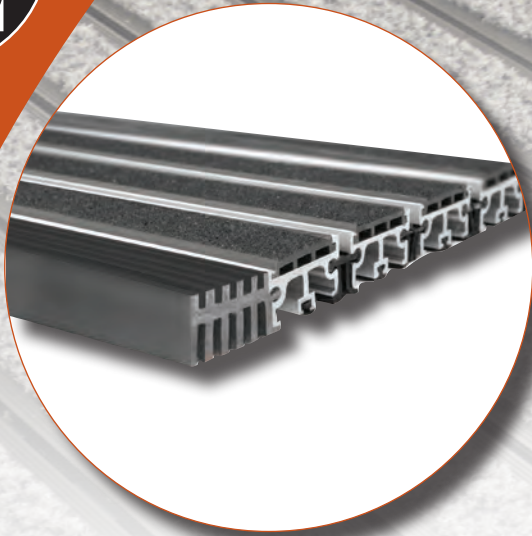




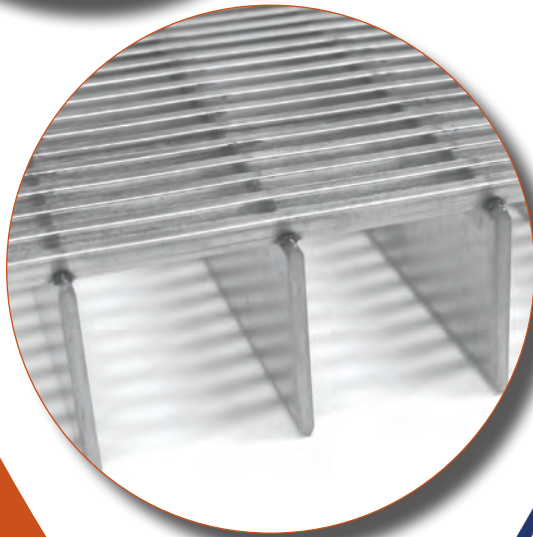
# ARCHITECTURAL ENTRANCE OPTIONS



**Division 12 48 13**  
**Entrance Floor Mats & Frames**



**Division 12 48 23**  
**Entrance Floor Grilles**



**Division 12 48 19**  
**Entrance Floor Gratings**

**ACTIVAR** INC.  
CONSTRUCTION PRODUCTS GROUP



JLI INDUSTRIES



AIR LOUVERS



SAMSON PRODUCTS



THOMAS ENTERPRISES



HIAWATHA



# PROTECT FLOORING AND IMPROVE INDOOR AIR QUALITY BY REMOVING DIRT, CONTAMINANTS AND WATER AT THE DOOR

Architects, Designers, and Facility Managers Know that an Effective Entrance Mat or Grate System in Building Entrances Keeps Floor Maintenance Costs to a Minimum, Plus Improves Indoor Air Quality.

According to ISSA (The Worldwide Cleaning Industry Association) data, "facilities with foot traffic of up to 1,000 people per day will have approximately 24 pounds of soil tracked in during a 20-day period. Matting can reduce that number drastically. For example, six feet of matting at a facility's entrance will remove 40 percent of soil, 12 feet of matting will remove 80 percent of soil and 36 feet of matting will remove 99 percent of soil."

- Reduce the costs of injuries due to slipping accidents, by diverting moisture
- Reduce the maintenance costs of interior floor by removing soil
- Increase the life of interior flooring products by protecting them from wear
- Improve indoor air quality by capturing pollutants



### Select By Wheel Load Requirement:

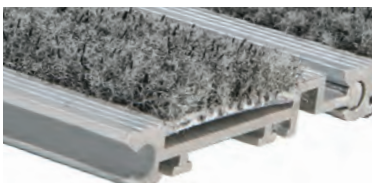
400 lbs per wheel	Luggage, Light Carts	700, 800 Series
1000 lbs	Heavy Cart	500, 600, 900 Series

### Select by Installation Type:

Surface Mounted Retrofit or New Construction:	700 & 800 Series Roll-up Mat or 503 Stainless Steel Grating
Recessed 7/16" Retrofit or New Construction:	700 & 800 Series Roll-up Mat
Recessed 5/8" or 9/16" Retrofit or New Construction:	508 Stainless Steel Grille
Recessed 1-1/4" New Construction:	509 Series Stainless Steel Grille
Recessed 3/4" Retrofit or New Construction:	508 & 600 Series Roll-up Mat Grille
Recessed 9/8" New Construction:	509 Stainless Steel Grille
Recessed 1-3/4" or 1-15/16" New Construction:	900 Series Rigid Aluminum Grating
Recessed 4-1/4" New Construction:	900 Series Rigid Aluminum Grating

### Select from 6 Durable Tread Types:

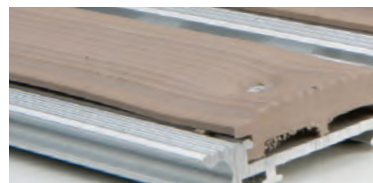
See Pages 10 & 11 for More Details on These Tread Types



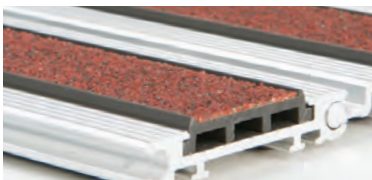
All New Premium Carpet with Scraping Fibers is Super Absorbent



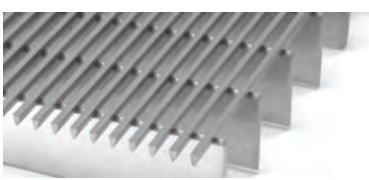
Tuff Tread™ Polypropylene is Waterproof & Non-Absorbent for Heavy Soil



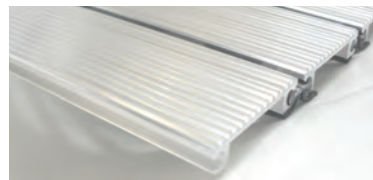
Extruded Vinyl is Waterproof, Non-Slip and Easy to Clean



Vinyl Abrasive for Interior is Extremely Slip-Resistant



Stainless Steel Grille—Longest Life Cycle, Scraping and Low Maintenance



Serrated Aluminum—Waterproof and Slip-Resistant. Excellent Scraping Ability & Maintenance

# ABOUT OUR REDESIGNED LINE OF MATS AND GRATINGS



**THE STRONGER RAIL DESIGN OF THE 700 AND 800 ROLL UP MATS PROVIDES A 400 LB PER WHEEL LOAD RATING.**

**CUSTOM SHAPES, CUTOUTS AND SPECIAL FEATURES AVAILABLE.**

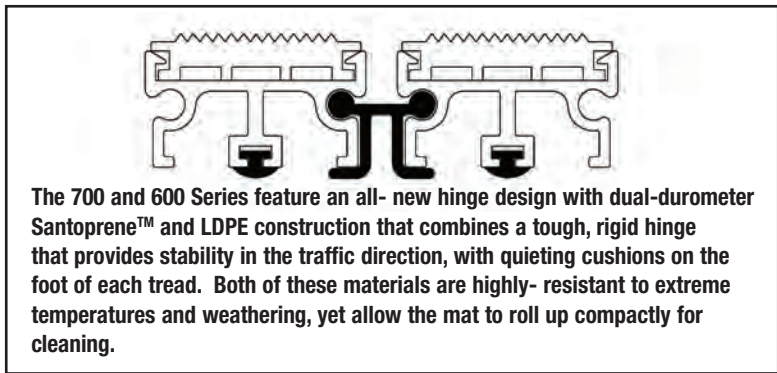
**NEW PREMIUM CARPET TREAD COMBINES THE ABSORBENCY OF PREMIUM CARPET WITH SCRAPING FIBERS TO REMOVE MORE DIRT.**

**THE 900 SERIES GRIDS DESIGNED FOR HEAVY-DUTY USE, ARE NOW RATED FOR 1000 LBS/WHEEL.**

**THE NEW THREE POINT SUPPORT DESIGN OF THE 600 GRATINGS GIVES EXTRA STRENGTH FOR HEAVY LOADS UP TO 1000 LB. PER WHEEL.**



**UPDATE THE LOOK OF YOUR ENTRYWAY— THIS 800 SERIES ROLL UP MAT WITH PEPPER CARPETING WAS INSTALLED IN AN EXISTING 7/16” RECESS WITH THE JL-TR FRAME**



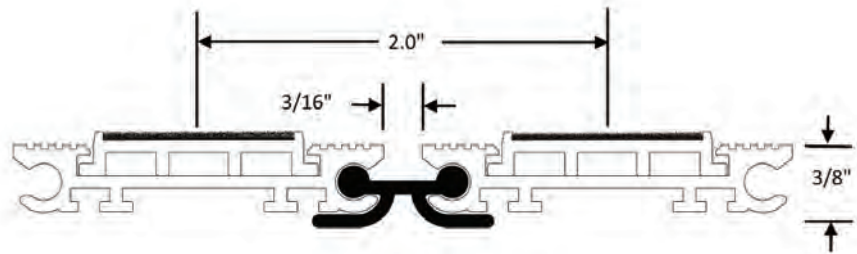
<u>Index</u>	<u>Page</u>
Activ-Grate™ 900.....	.6
Activ-Grate™ 600.....	.7
Activ-Mat™ 700.....	.4
Activ-Mat™ 800.....	.5
Activ-Grid™ 500.....	.8-9
Tread Colors and Details .....	10-11
LEED and Environmental Info.....	.12



# ACTIV-MAT™ 700 SERIES ROLL-UP MATS

## ECONOMICAL, LOW PROFILE, MEDIUM DUTY ROLL-UP ENTRANCE MAT WITH LDPE HINGES

- More Stability with the New Dual-durometer Hinges that Combine a Tough Hinge with Full-width Cushioning. Quieter than Aluminum.
- Added Scraping with Two 3/8" Wide Serrated Aluminum Treads Integrated Into Each Tread Rail.
- Mat Rolls up Compactly for Cleaning.
- All-New Premium Carpet Tread Combines the Absorbency of Premium Carpet with Scraping Fibers to Remove More Dirt.
- Rated for 400 lbs per Wheel Rolling Load.



### Specifications:

- 3/8" Tread Rails and Frames are Mill Finish, 6063-T5 Aluminum Alloy.
- Treads are Spaced 2" (50.8mm) on Center with 6 Treads Per Foot in the Direction of Travel.
- The 3/16" (4.76 mm) Space Between Rails Prevents Heels from Catching, Yet Allows Debris and Moisture to Fall to the Recess Between the Tread Rails.

**TREAD SELECTION:** See Pages 10-11 for More Details.

**JL-700 Premium Carpet Tread** - Super absorbent, stain-resistant 33 oz. nylon carpet for interiors, now with 10 mil scraping fibers added.

**JL-701 Vinyl Tread** - Full length vinyl serrations provide excellent traction for wet exterior or interior entry ways.

**JL-702 Serrated Aluminum** - All Aluminum construction with full-length serrations, nonflammable and waterproof for interior or exterior entry ways.

**JL-704 Vinyl Abrasive Tread** - Abrasive grit provides our highest coefficient of friction for interior installations.

**JL-705 Tuff Tread™** - Non-absorbent polypropylene carpet with tough 20 mil fibers is best at scraping shoes to remove dirt. Interior or exterior.

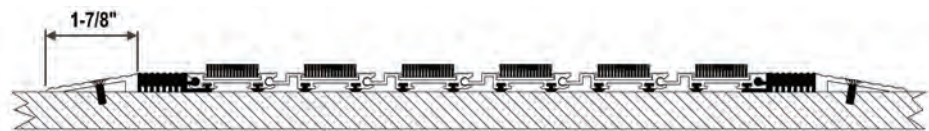
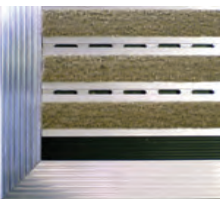
**FRAME FINISHES:** Mill or Anodized - Dark Bronze or Black

Photos: BACK COVER SHOWS 700 WITH R FRAME AND COAL TUFF TREAD™

### FRAMES FOR 700 AND 800 SERIES SHOWN ON PAGES 4&5



**JL-R:** Recessed frame that is cast-in-place and allows the mat to rest flush with the floor surface. 1-3/8" (34.9mm) Deep by 1/2" (12.7mm) profile. Extruded aluminum 6063-T5 alloy construction. End filler is provided at both ends to create a snug fit. A blocked out area at least 1- 1/2" (38.1 mm) deep and 2" (50.8 mm) larger than the frame dimensions must be provided in the floor.

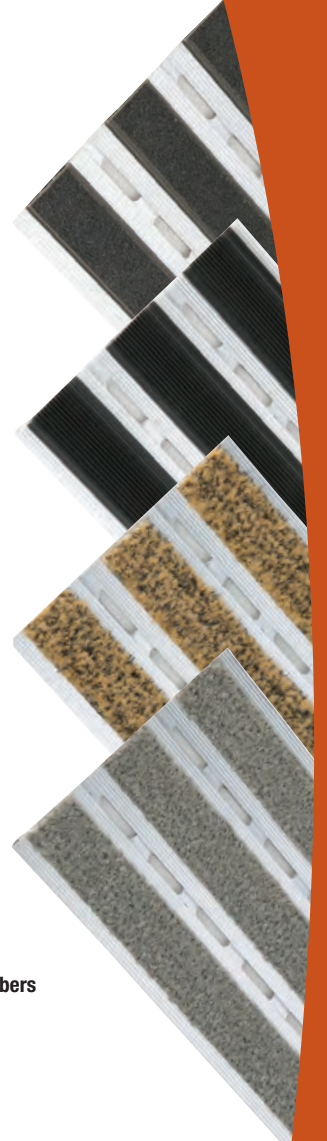
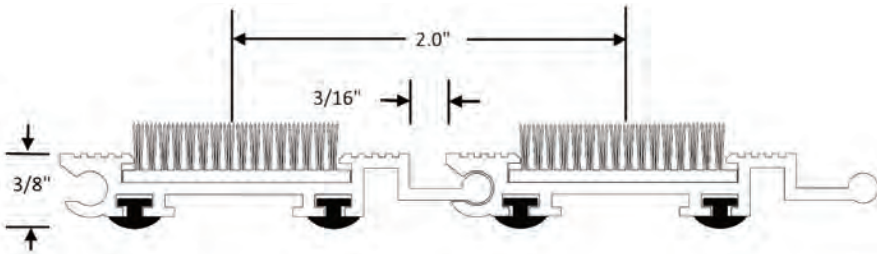


**JL-SA:** Surface-mounted tapered aluminum frame for installation by anchoring to floor. Serrated aluminum 6063-T5 alloy extrusion frame 3/8" (9.5 mm) deep by 1-7/8" (47.6 mm) give traction to the full width of the mat. End filler is provided at both ends to create a snug fit.



## LOW PROFILE ROLL-UP ENTRANCE MAT WITH ALUMINUM HINGES—MEDIUM DUTY

- Rated for 400 lbs. per Wheel Rolling Load
- Added Scraping with Two 3/8" Wide Serrated Aluminum Treads Integrated Into Each Tread Rail.
- Mat Rolls up Compactly for Cleaning.
- All-New Premium Carpet Tread Combines the Absorbency of Premium Carpet with Scraping Fibers to Remove More Dirt.
- Each Tread Rail has Two Supports with Full-Width Cushions.
- Aluminum Hinges are More Durable than Plastic Hinge Systems.



### Specifications:

- 3/8" Tread Rails and Frames are Mill Finish, 6063-T5 Aluminum Alloy.
- Treads are Spaced 2" (50.8mm) on Center with 6 Treads Per Foot in the Direction of Travel.
- The 3/16" (4.76 mm) Space Between Rails Prevents Heels from Catching, Yet Allows Debris and Moisture to Fall to the Recess Between the Tread Rails.

### TREAD SELECTION:

See Pages 10-11 for More Details.

**JL-800 Premium Carpet Tread** - Super absorbent, stain-resistant 33 oz. nylon carpet for interiors, now with 10 mil scraping fibers added.

**JL-801 Vinyl Tread** - Full length serrations provide excellent traction for wet interior entry ways.

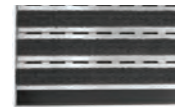
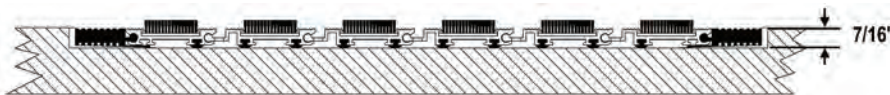
**JL-804 Vinyl Abrasive Tread** - Abrasive grit provides our highest coefficient of friction for interior installations.

**JL-805 Tuff Tread™** - Non-absorbent polypropylene carpet with tough 20 mil fibers is best at scraping shoes to remove dirt. Interior or exterior.

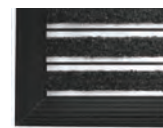
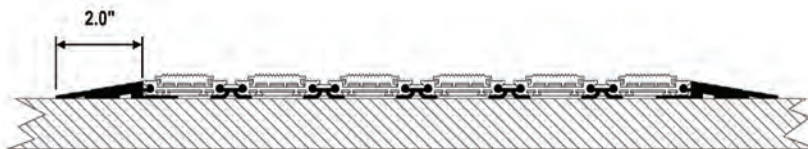
**FRAME FINISHES:** Mill or Anodized - Dark Bronze or Black

Photos: COVER SHOWS MODEL 800 WITH ASH TUFF TREAD™, BLACK ANODIZED FRAME AND RAILS. PAGE 3 SHOWS 800 WITH TR FRAME AND PEPPER CARPETING

### FRAMES FOR 700 AND 800 SERIES SHOWN ON PAGES 4 & 5



**JL-TR:** Angle frame for butting up to tile or carpet. 7/16" (11.1 mm) deep by 1/8" (3.2mm) profile. Extruded aluminum 6063-T5 alloy construction. End filler is provided at both ends to create a snug fit.



**JL-SV:** Surface-mounted tapered frame for a moveable installation. 2" (50.8 mm) wide durable black vinyl with serrations to reduce slipping is attached mechanically to tread rails. Order in full tread-width increments.



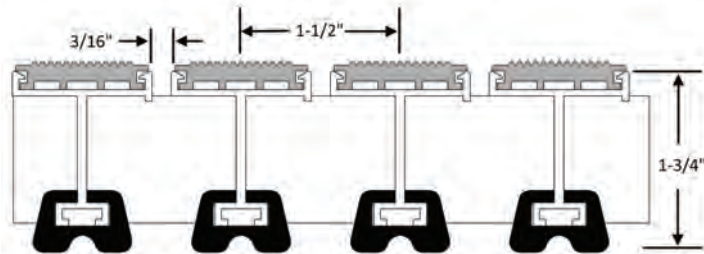
# ACTIV-GRATE™ 900 SERIES GRATINGS

## HEAVY-DUTY RECESSED GRATING FOR PERMANENT INSTALLATION IN HIGH TRAFFIC AREA

- The All-new Design Gives You the Stability You Need in a Permanent, Recessed Installation that can be Removed for Cleaning.
- Cushions on Each Tread Rail Reduce Noise by Eliminating Metal to Concrete Contact.
- Premium Carpet Tread Now Combines the Absorbency of Premium Carpet with Scraping Fibers to Remove More Dirt.
- Rated for 1000 lbs. per Wheel Rolling Load.
- Eq5 Indoor Chemical And Pollutant Source Control: Meets The Requirement If Product Is At Least 10 Feet (3.04 M) In The Traffic Direction And The Product Is Properly Maintained.



Detail of Construction



### Specifications:

- Tread Rails and Frames are Mill Finish, 6063-T5 Aluminum Alloy.
- Treads are Spaced 1 1/2" (38mm) on Center with 8 Treads Per Foot in the Direction of Travel, Providing Tread Over 89% of Grating Area.
- The 3/16" (4.76 mm) Space Between Rails Prevents Heels from Catching, Yet Allows Debris and Moisture to Fall to the Recess Between the Tread Rails.
- Rails are Mechanically Joined Every 10" (254 mm) by Keylock Bars.

### TREAD SELECTION:

See Pages 10-11 for More Details.

**JL-900 Premium Carpet Tread** - Super absorbent, stain-resistant nylon carpet for interiors, now with 10 mil scraping fibers added.

**JL-901 Vinyl Tread** - Full length serrations for excellent traction for wet interior entryways

**JL-902 Serrated Aluminum** - All aluminum with full-length serrations, nonflammable and waterproof walking surface for interior.

**JL-904 Vinyl Abrasive Tread** - Abrasive grit has the highest coefficient of friction for interior installations

**JL-905 Tuff Tread™** - Non-absorbent polypropylene carpet with tough 20 mil fibers is best at scraping shoes to remove dirt. Interior or exterior.

### FRAME FINISHES:

Mill or Anodized - Dark Bronze or Black

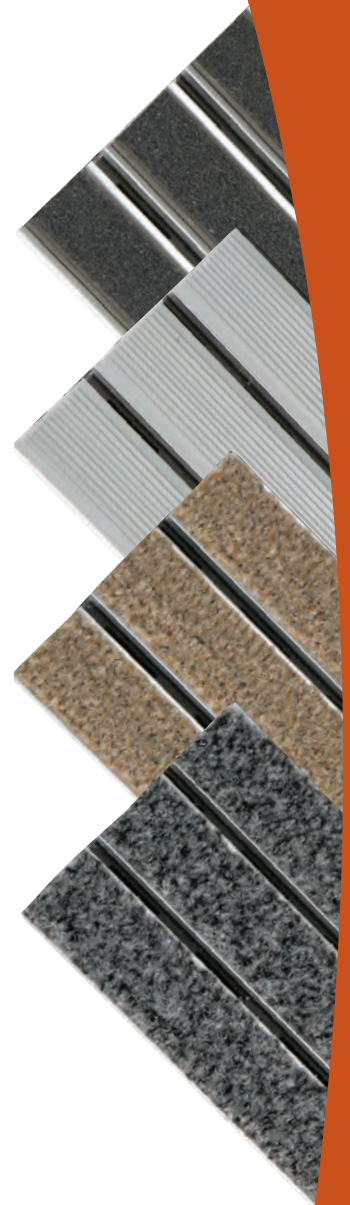
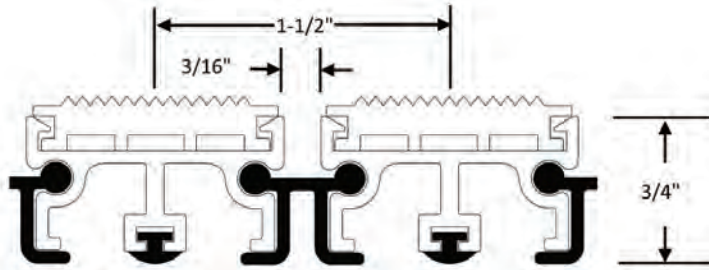
<p><b>JL-L:</b> Cast-in-place recessed level-bed frame—1000 lb per wheel load, 1-15/16" (49.2mm) deep by 1/2" (12.7mm) profile aluminum alloy. New mitered corner design connects quickly. A blocked out area at least 2" deep and 2" larger than the frame dimensions must be provided in the floor.</p>	<p><b>JL-LAF:</b> Recessed angle 1000 lb per wheel load, 1-3/4" (44.5mm) deep by 1/8" (3.2mm) profile aluminum extrusion. A blocked out area at least 1 3/4" deep and 1/2" larger than the frame dimensions must be provided in the floor.</p>
<p><b>JL-CP DEEP PIT:</b> Cast-in-place concrete Pit—recessed pit with adjustable cross-supports, 4-1/4" (108mm) by 1/2" (12.7mm) profile aluminum alloy 24" O.C. A blocked out area at least 4 1/2" deep and 3" larger than the frame dimensions must be provided in the floor.</p>	<p><b>JL-DP DEEP PIT WITH DRAIN PAN :</b> Cast-in-place concrete pit frame with aluminum drain pan (JL-DP). 4-1/4" (108mm) by 1/2" (12.7mm) profile aluminum alloy with adjustable cross-supports 24" O.C. Drain pan is mill aluminum. A blocked out area at least 4 1/2" deep and 3" larger than the frame dimensions must be provided in the floor.</p>

# ACTIV-GRATE™ 600 SERIES ROLLUP GRATING



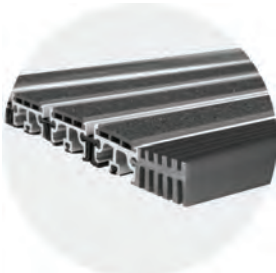
## HEAVY-DUTY ROLL UP GRATINGS FOR HEAVY WHEEL LOADS AND HIGH TRAFFIC

- The New 3 Point Support Design for Each Rail Gives this Grating Extra Strength for Heavy Loads up to 1000 lbs. per Wheel Rolling Load.
- Our All-New Hinge Design Combines a Tough, Rigid Hinge that Provides more Stability in the Traffic Direction, with Full-Width Cushions on the Foot of Each Tread. This New Design Also Eliminates Waves as Carts are Rolled Across.
- EQ5 Indoor Chemical and Pollutant Source Control: Meets the Requirement if Product is at Least 10 Feet (3.04 M) in the Traffic Direction and the Product is Properly Maintained.

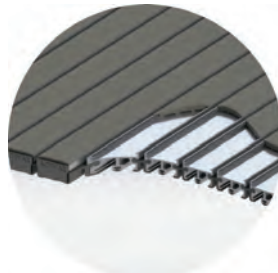


### Specifications:

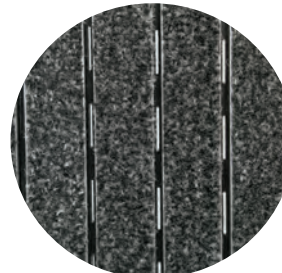
- Tread Rails and Frames are Mill Finish, 6063-T5 Aluminum Alloy.
- Treads are Spaced 1 1/2" (38mm) on Center with 8 Treads Per Foot in the Direction of Travel, Providing Tread Over 89% of Grating Area.
- The 3/16" (4.76 mm) Space Between Rails Prevents Heels from Catching, Yet Allows Debris and Moisture to Fall to the Recess Between the Tread Rails. Each tread Rail has an Endcap.



Detail of Filler



Detail of Construction



Detail of 600 and 900 Series Drainage

### TREAD SELECTION: See Pages 10-11 for More Details.

**JL-600 Carpet Tread** - Super absorbent, stain-resistant 33 oz. nylon carpet for interiors, now with 10 mil scraping fibers added.

**JL-601 Vinyl Tread** - Full length vinyl serrations provide excellent traction for wet interior entryways.

**JL-604 Vinyl Abrasive Tread** - Abrasive grit provides our highest coefficient of friction for interior installations.

**JL-605 Tuff Tread™** - Non-absorbent polypropylene carpet with tough 20 mil fibers is best at scraping shoes to remove dirt. Interior or exterior.

### FRAME FINISHES: Mill or Anodized - Dark Bronze or Black

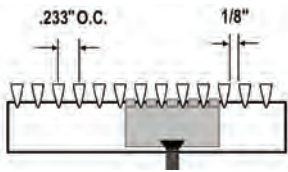
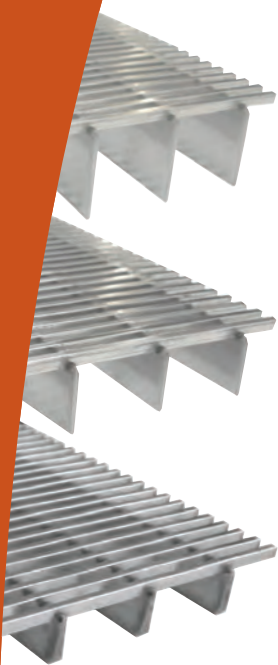
<p><b>JL-A:</b> Cast-in-Place recessed angle frame that allows mat to rest flush with the floor surface. 1 -3/8" (34.9MM) Deep by 1/2" (12.7mm) profile. Extruded aluminum 6063-T5 alloy construction. A blocked out area of at least 1-1/2" (38.1 mm) deep and 2" larger than the frame dimensions must be provided in the floor. End filler is provided at both ends to create a snug fit.</p>	<p><b>JL-AA:</b> Angle frame for existing 3/4" recess. 3/4" 19 mm) deep by 1/8" (3.2mm) profile. Extruded aluminum 6063-T5 alloy construction. A blocked out area of at least 3/4" (19mm) deep and 1/2" (12.7 mm) larger than the frame dimension must be provided in the floor. End filler is provided at both ends to create a snug fit.</p>



# ACTIV-GRID™ 500 SERIES STAINLESS GRILLE

## HEAVY-DUTY ALL STAINLESS GRILLE FOR HIGH-TRAFFIC AREAS WITH LOW MAINTENANCE AND THE LONGEST LIFE CYCLE

- These Permanently Installed Stainless Steel Grilles for Interior or Exterior Applications are Attractive and Very Low Maintenance.
- Our New Hidden Lockdown System Simplifies Installation.
- MR Credit 4.1, MR 4.2 Recycled Content: Frames and Tread Rails are Constructed Of 72% Post Consumer Recycled Stainless Steel.
- EQ5 Indoor Chemical and Pollutant Source Control: Meets The Requirement if Product is at Least 10 Feet (3.04 M) in The Traffic Direction.
- Designed to Reduce Slipping.
- Non-flammable.
- Longest Warranty of all Grilles— 5 Years.



### Specifications

- Grilles Are Constructed Of High Quality, Satin Finish, Type 304 Stainless Steel.
- Surface Wires .093" (2.4mm) By 0.156" (4mm) Are Designed For Maximum Scraping. They Are Resistance-Welded To 0.70" (1.8mm) Support Bars Spaced 1" (24mm) O.C.
- Grilles are Spaced 1/8" (3.2 mm)- Close Enough To Be Heel-Proof And Far Enough Apart To Divert Dirt, Moisture And Debris Before It Is Tracked Into The Building. Tread Wires Are To Run Perpendicular To Traffic Direction.

### GRILLE SIZES:

**JL-503:** 7/16" (11.11 mm) profile (sections up to 7'6" x 4'0").

**JL-508:** 5/8" (15.88 mm) profile (sections up to 7'6" x 4'0").

**JL-509:** 1-1/8" (28.58 mm) profile (sections up to 8'6" x 4'0" each).

Multiple Sections Can be Combined to Make Sizes to Order.

<p><b>SURFACE-MOUNT PERMANENT FRAME JL-38SM:</b> Surface-mounted tapered aluminum frame for installation by anchoring to floor. Serrated aluminum 6063-T5 alloy extrusion frame 3/8" (9.5 mm) deep by 1-7/8" (47.6 mm) give traction to the full width of the mat.</p>	<p><b>NEW ANCHORING SYSTEM FOR RECESSED FRAMES:</b> We have re-engineered the hold-down anchors for easier installation and removal for cleaning.</p>
<p><b>STAINLESS DEEP PIT FRAME: CAST-IN-PLACE FOR JL-509 MODEL</b>  <b>JL-98SSDP:</b> #4 Stainless steel deep pit frame with room for excess moisture to drain away. Depth varies with installation.  <b>JL-98SSDP W/PAN:</b> JL-98DPSS with optional drain pan.</p>	<p><b>STAINLESS LEVEL BED FRAME:</b>  <b>JL-38SS Recessed Frame:</b> #4 Stainless steel 9/16" deep frame for 503.  <b>JL-58SS Recessed Frame:</b> #4 Stainless steel 3/4" deep frame for 508.  <b>JL-98SS Recessed Frame:</b> #4 Stainless steel 1-1/4" deep frame for 509</p>



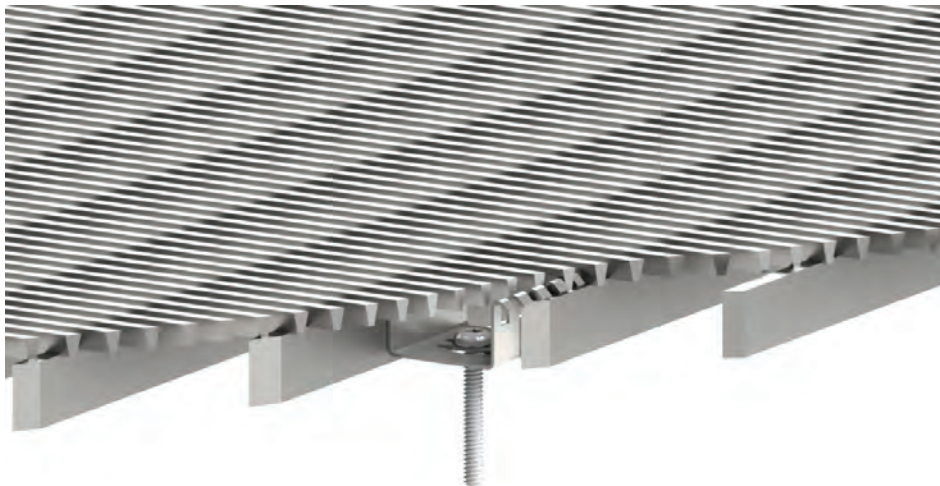
# 500 SERIES—COMBINING GREAT SCRAPING WITH ELEGANCE



EXPERIENCE THE SIMPLICITY AND DURABILITY OF STAINLESS STEEL GRILLES



**Special Cutouts or Shaped Edges?  
No Problem - Custom Orders Welcome!**



**Detail of 500 Series Construction Hidden Lockdowns.**



# TREAD INSERTS AND ANODIZED FINISHES

**NEW PREMIUM CARPET TREAD:** Our most absorbent and extremely durable carpet tread for interiors is designed to clean and dry shoes, and trap moisture. Premium 33 oz woven, solution-dyed nylon with black 10 mil monofilament fibers added for better scraping. Tread is secured to tread rails.

Denier: 17 (3700 Denier)  
Pile Height: 1/4"  
Models: 600, 700, 800, 900

Coefficient of Friction: Dry .85, Wet .51  
Properties: Anti-Stain, Anti-Static, Anti-Microbial

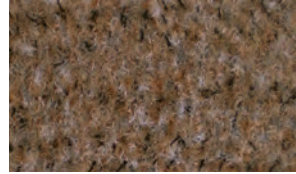
Yard Weight: 33 oz/yd<sup>2</sup>  
Warranty: 2 Year



Mint



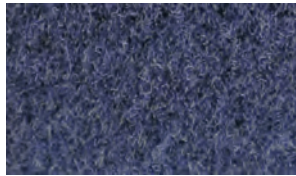
Pepper



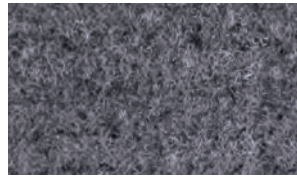
Sand



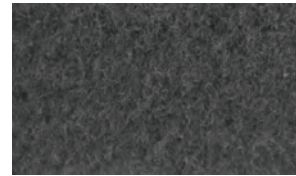
Silver



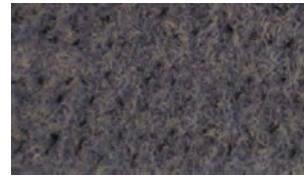
Sapphire



Grey



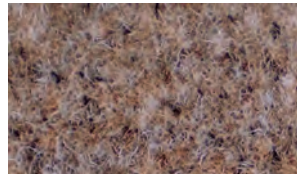
Artesian



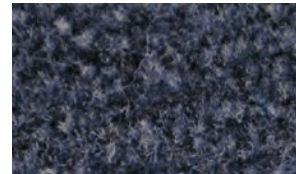
Tin



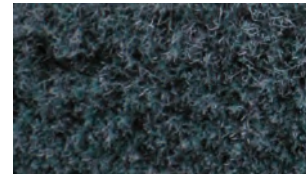
Walnut



Mushroom



Windsurf



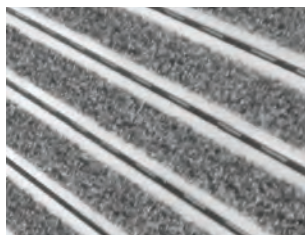
Sage

These Colors are Examples Only—Contact Us for Samples

## ABOUT COEFFICIENT OF FRICTION FOR WALKING SURFACES:

The terms “slip resistance” or “coefficient of friction” are used to describe the friction of a surface. One of the most commonly referenced methods for determining slip resistance is ASTM C1028 Standard Test Method for Determining the Static Coefficient of Friction of Ceramic Tile and Other Like Surfaces by the Horizontal Dynamometer Pull Meter Method. Materials tested using this method are often evaluated under both wet and dry conditions using a Neolite shoe heel assembly. The amount of force required to set the shoe assembly in motion is divided by the weight of the assembly to yield the static coefficient of friction (SCOF or COF). The higher the number, the more slip-resistant the material is.

The Coefficient of Friction is Shown on Each Tread Type on These Two Pages. The Treads with the Highest Value are Vinyl Abrasive with a wet cof of .80 and Vinyl with a wet cof of .73 .



Mill or Clear Anodized



Dark Bronze Anodized



Black Anodized



**TUFF TREAD™ WATERPROOF BRUSH TREAD:** For interior or exterior use in high traffic entrances; does not absorb moisture, resists traffic pattern wear, and stands up to weather. Constructed of crimped, polypropylene fibers that are large, stiff, chisel shaped and widely spaced. 20-mil scraping fibers that are bonded to the backing and secured to tread rails. Tuff Tread is colorfast, provides lower life cycle costs than carpet.

Denier: 600 (4500 total Denier)  
Pile Height: 1/4"

Coefficient of Friction: Dry .78, Wet .71  
Warranty: 5 Year

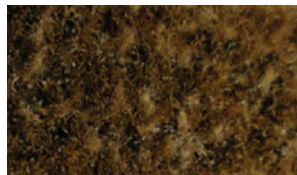
Yard Weight: 22 oz/yd<sup>2</sup>  
Models: 605, 705, 805, 905



**Toffee**



**Ash**



**Mocha**



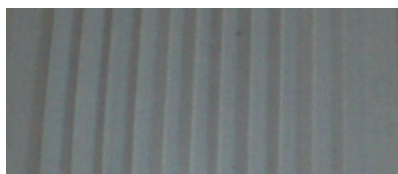
**Coal**

These Colors are Examples Only—Contact Us for Samples

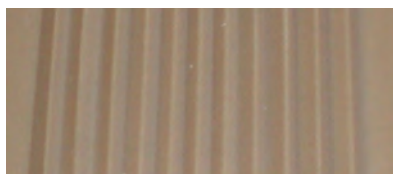
**SERRATED VINYL TREAD:** Use this waterproof tread with continuous striations for high-traffic, wet exterior or interior entryways. Extruded vinyl tread is mechanically secured to tread rails.

Coefficient of Friction: Dry .88, Wet .73  
Models: 601, 701, 801, 901

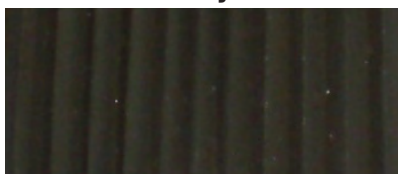
Warranty: 2 Year



**Grey**



**Tan**



**Dark Brown**



**Black**

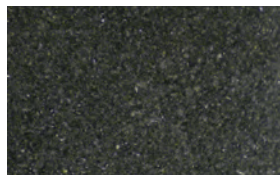
**VINYL ABRASIVE TREAD:** Use this tread with factory-applied abrasive grit that gives extra friction for high-traffic, interior entryways. Constructed of abrasive grit tape-bonded to a rigid PVC plastic tread insert that is secured to tread rails.

Coefficient of Friction: Dry .75, Wet .80  
Models: 704, 904

Warranty: 2 Year



**Brick Red**



**Dark Brown**



**Ocean Grey**



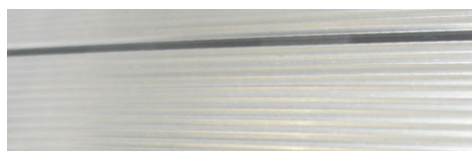
**Flat Black**

**SERRATED ALUMINUM TREAD & ANODIZED FINISHES:** This all aluminum tread is ideal for high-traffic or wet interior entryways.

Standards: Meets NFPA 253 & FTM Standard 372

Warranty: 2 Year

Models: 702, 902



Tuff Tread™ and all Models Including JL-500, JL-600, JL-700, JL-800, JL-900 Series Model Numbers are trademarks of Activar.



# ENTRANCE MAT AND GRATING OPTIONS THAT HELP KEEP YOUR BUILDING CLEANER AND PROTECT YOUR INVESTMENT IN FLOORING CHOICES

## Environmental:

### LEED EQ Credit 5: Indoor Chemical and Pollutant Source Control: 1 Possible Point

For Permanent Installations. Product Must Be At Least 10 Feet (3.04 M) In The Traffic Direction And Be Maintained Properly. Roll-Up Mats Are Acceptable Only When Maintained On A Weekly Basis By Contracted Servicer.

500 Series, 600 Series, 900 Series Gratings  
700 Series, 800 Series Roll-Up Mats

### LEED EQ Credit 4.1, 4.2, 4.3: Low-Emitting Materials—Flooring Systems: 1 Possible Point

4.1 Low-Emitting Materials—Adhesives and Sealants (None used)  
4.2 Low-Emitting Materials—Paints and Coatings (None used)

Models 503, 508, 509, 702, 902  
Models 503, 508, 509, 702, 902

### LEED MR Credit 4.1, 4.2: Recycled Content—1-2 Possible Points

72% Post Consumer Recycled Frame & Tread Rails  
74% Recycled Frame & Tread Rails

500 Series Stainless - All Stainless Construction  
Models 702, 902 Aluminum Tread - All Aluminum Construction

### LEED MR Credit 5.1: Regional Materials—1-2 Possible Points

Products Installed Within 500 Miles Of The Manufacturing Facility In Bloomington, Mn

500, 600, 700, 800 and 900 Series

See Full Details on our Website



**ADD A SURFACE-MOUNT ENTRANCE MAT TO EXISTING ENTRYWAYS  
700, 800 AND 500 SERIES CAN BE INSTALLED WITH A SURFACE-MOUNT FRAME  
JI-701 WITH COAL TUFF TREAD® SHOWN AT LEFT**

**See Our Full Product Offering from Divisions  
7, 8, 10, 11, 12, 21 and 23 on Our Website.**



ACPG HEADQUARTERS/JL INDUSTRIES: BLOOMINGTON, MN

ACPG WEST COAST/SAMSON PRODUCTS: COMMERCE, CA

ACPG WAREHOUSES: DALLAS TX, LANCASTER PA, ATLANTA GA, SEATTLE WA, CHICAGO IL, FARGO ND, OMAHA NE, FT MYERS, FL