

8

inpro®

INTERIOR AND EXTERIOR
ARCHITECTURAL PRODUCTS

2017

• **CLICKEZE®**

CUBICLE CURTAINS
+ TRACK

MasterFormat® Divisions: 10 | 12



CLICKEZE® INDEX

Privacy Systems

ABOUT CLICKEZE®

- 02 About Clickeze®
- 04 From Measure to Install

BEDDING

- 06 Bedspreads
- 06 Bed Scarves
- 07 Bedspread + Window Treatment Fabrics

SHOWER CURTAINS

- 08 Shower Curtains
- 09 Shower Package

CUBICLE TRACK

- 12 Formatrac®
- 16 Whisper Cube®
- 18 Ultra Cube®
- 20 Optitrac®
- 22 Suspended Track
- 23 IV Systems
- 24 Safety Loading Unit
- 26 Nanotrac®

PRIVACY CURTAINS

- 28 Curtain Options + Accessories
- 30 EZE-Swap® Cubicle Curtain Snap Panel System
- 31 Disposable Curtains

FABRICS

- 32 In Stock Fabrics
- 33 24-Hour Curtains
- 36 Fabric Overview
- 38 Shield by Panaz®
- 49 Platinum Fabric Collection
- 55 Gold Fabric Collection
- 60 Silver Fabric Collection
- 65 Bronze Fabric Collection
- 69 Dim Out Fabrics



We've got you covered with

CLICKEZE[®] PRIVACY SYSTEMS

At Clickeze[®], we cover a facility's most essential privacy needs by making and installing innovative solutions to ensure people feel comfortable. With professional installation, contemporary designs and cutting-edge products, we work with you to provide a warm and welcoming environment for patients, residents, visitors and staff.



PRODUCT EXPERTS

Our team of product experts can help you find what you need and tailor it to your facility. From solar shades to window treatments to cubicle track and curtains, Clickeze has you covered.




VARIETY OF PATTERNS

We stay up-to-date with the latest color trends to provide you with a variety of pattern choices for your soft goods. We work with all major textile manufacturers to acquire the pattern or fabric you want.



PROFESSIONAL INSTALLATION

In addition to customizing your soft goods, we can also install them. Our professional team will be there every step of the way to ensure your products are installed efficiently with the expertise they require.



PROTECTING THE COMFORT OF PEOPLE IN BUILDINGS

Pinch Pleat Draperies

FROM MEASURE TO INSTALL, WE HANDLE IT ALL.

We've got you covered from start to finish.

We all know the construction industry can be fast-paced. Whether you're an architect trying to specify the right product for the right space, an interior designer working on the aesthetics or a facility manager maintaining the integrity of the building, you have a lot on your plate. It can be difficult to manage every detail, especially when working with a limited budget. That's where our commitment begins.

Not only do we have state-of-the-art production facilities to make products to your specification, but our expert installation team and service staff have you covered so you never have to worry about the details of managing or maintaining your privacy systems. Let us take care of your next project.



MEASURE

We have Territory Managers located throughout the country that can assist in the measuring process. Whether you need a little refresher or need to learn from scratch, our team will be there to help you get the correct measurements for your project.



DESIGN

From proprietary fabrics to fabrics from major textile mills, our fabric offering includes a nice mix of options. Our product experts will help you find a pattern that complements the design of your building. Plus, we can purchase from any textile company if we don't have what you're looking for.



FABRICATE

We have two production facilities located at opposite ends of the country with skilled sewing experts. What does that mean for you? Great lead times and quality products made in the USA.



INSTALL

In addition to manufacturing the products, we have several teams of installers that know the products like the backs of their hands. We'll make sure your products are professionally installed.

BEDDING

Comfort and warmth all wrapped into one.

Bedspreads are a great add-on for your patient or resident rooms. Coordinate the bedspreads in your healthcare facility with other soft goods by choosing complementary fabrics from our fabric selection or any fabric of your choice.



THROW

Standard Size: Hospital Twin 68" (1.72m) x 108" (2.74m)
Custom sizes also available.



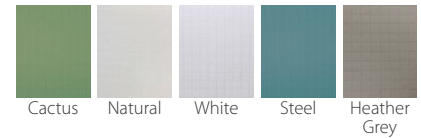
BOXED CORNER

Standard Size: Hospital Twin 68" (1.72m) x 108" (2.74m)
Custom sizes also available.



OXFORD THROW

Standard Size: Hospital Twin 70" (1.78m) x 110" (2.79m)
Please see color options shown below.
Custom sizes also available.



BED SCARVES

Coordinating bed scarves available. Speak with your sales representative for more details.

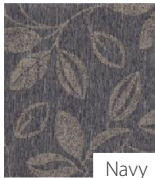
BEDSPREAD + WINDOW TREATMENT FABRICS

Choose from one of our Bedspread and Window Treatment specific fabrics below.

- You can also choose from one of our program fabrics shown on our website or specify your own from any textile vendor.

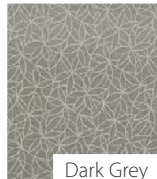
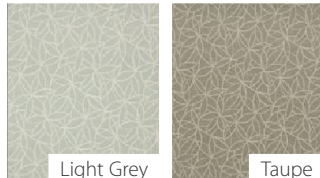
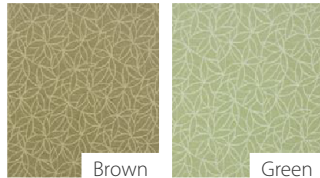
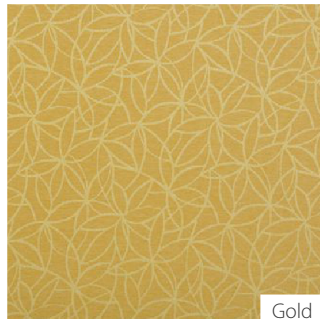
ANNABEL

Width: 54" (137.16cm) fabric
Repeat: 13.75" (34.93cm)H x 10" (25.4cm)V
Shown: Vertically Seamed
Woven: 100% Polyester



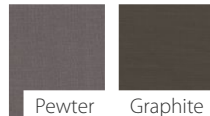
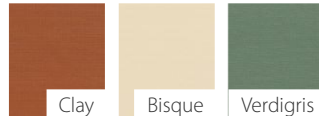
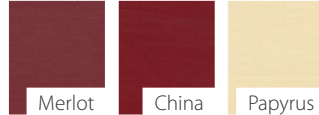
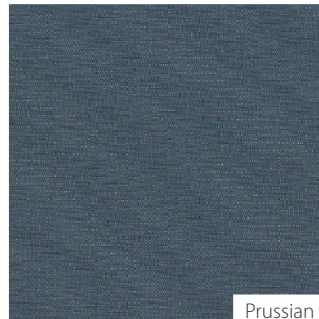
AZALEA

Width: 54" (137.16cm) fabric
Repeat: 11" (27.94cm)H x 12" (30.48)V
Shown: Vertically Seamed
Woven: 100% Polyester



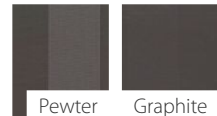
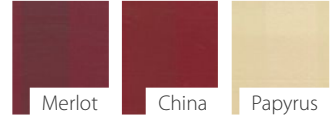
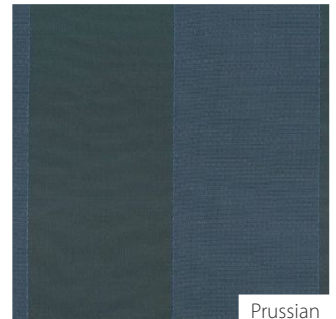
CAPE COD

Width: 54" (137.16cm) fabric
Repeat: 0" (0cm)H x 0" (0cm)V
Shown: Vertically Seamed
Woven: 100% Polyester FR Blend



COLONIAL

Width: 54" (137.16cm) fabric
Repeat: 6" (15.24cm)H x 0" (0cm)V
Shown: Vertically Seamed
Woven: 100% Polyester FR Blend



SHOWER CURTAINS

Don't neglect your shower areas.

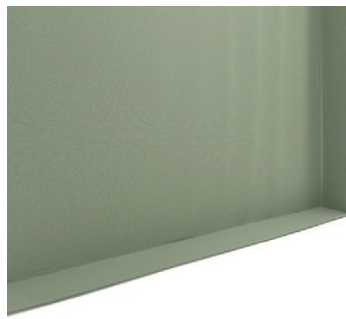
Privacy and cleanliness are of the utmost importance in shower areas. Clickeze® Shower Curtains are available for any need including ADA compliance. Our shower fabrics provide exceptional durability and sanitary protection. We also recommend using Shield by Panaz® fabrics for shower curtains. These fabrics contain antimicrobial* properties that inhibit the growth of mold and mildew reducing maintenance and making cleaning easier. Super Bio Stat is a high performance vinyl; it is stain and odor resistant with antimicrobial* properties.

**When laundered per manufacturer's instructions.*



STANDARD

Standard shower curtains are custom-made to your specifications. Choose from the options below or our Shield by Panaz fabrics.



ADA

ADA Shower Curtains provide a temporary barrier with outstanding water leak prevention that meets ADA requirements. Available in Super Bio Stat.



SECURITY

Security Shower Curtains are ideal for behavioral health facilities, detention centers, massage schools or lab testing areas. Mesh on top for air/steam circulation, 38" (96.5cm) Super Bio Stat middle and 22" (55.9cm) Rhino Mist bottom. Custom sizes available.

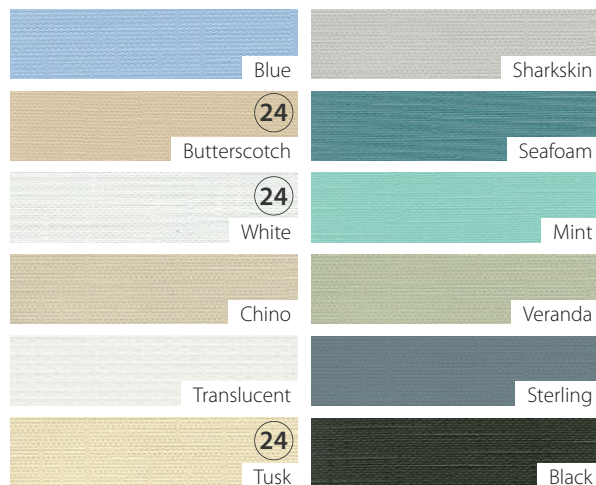
Fabrics

SUPER BIO STAT

Width: 72.5" (184.15cm) fabric
Repeat: 0"
Multi-purpose Vinyl
13 Gauge Vinyl
Super Bio Stat is treated with an antimicrobial agent that inhibits and controls bacteria growth

24 Visit inprocorp.com to order 24-hour curtains now!

Fire Rated



CHALET

Width: 72" (182.88cm) fabric
Repeat: 0"
100% Polyester
Visa® finish resists stains so dirt and discoloration disappear after washing. Chalet is treated with an antimicrobial agent that inhibits and controls bacteria/mildew growth

Fire Rated



THE COMPLETE SHOWER PACKAGE

Endurant® and Clickeze® come together to offer the total package.

What do our Clickeze® and Endurant® divisions have in common? Showers. Both of these divisions provide proprietary products for your shower areas that are antimicrobial to inhibit the growth of mold and mildew. For our full product offering visit inprocorp.com.

Here are the Inpro components that make up the ideal shower system:



OPTITRAC® CUBICLE TRACK



SHIELD BY PANAZ® SHOWER CURTAIN



BIOPRISM® SHOWER RECEPTOR



BIOPRISM® SHOWER SURROUND



BIOPRISM® SOAP DISHES



GRAB BARS



SHOWER RINGS



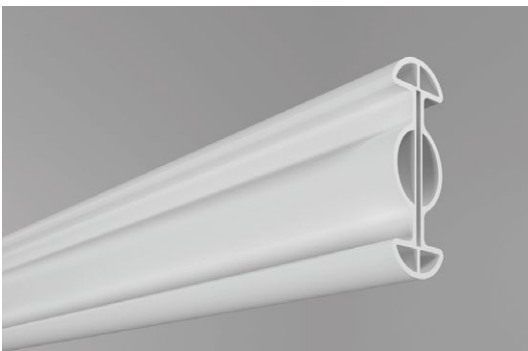
SHOWER RODS

CUBICLE TRACK

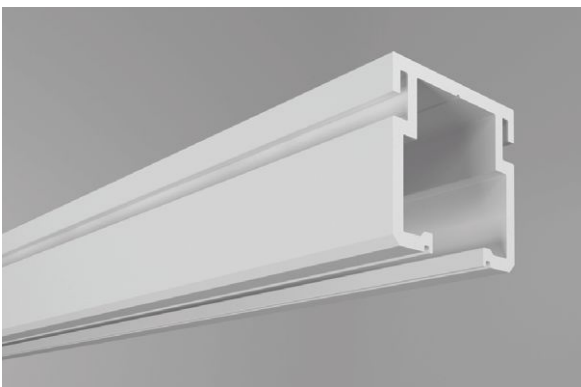
Keeping your privacy curtains on track.

Our product experts are on hand to help you make the correct selection and are dedicated to keeping you on track with a quick 48-hour shipping turnaround time.*

**Maximum order size for 48-hour shipping is \$10,000. Lead times vary for products not in stock. Please contact a Clিকেজে® representative for specific lead times.*



FORMATRAC®



WHISPER CUBE®

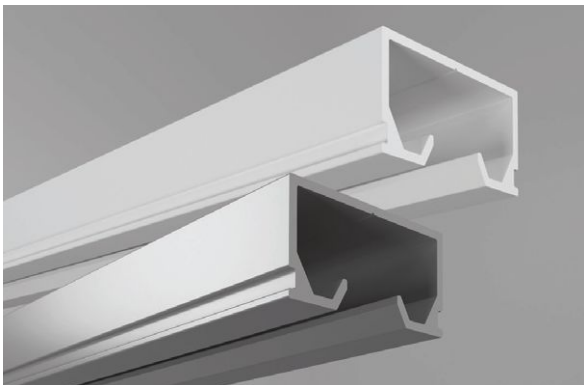


ULTRA CUBE®



CUBICLE CURTAINS + TRACK

Optitrac® Cubicle Track



OPTITRAC®



NANOTRAC®

THE FORMATRAC® ADVANTAGE

It's time to design your track around your room, not the other way around.

Easily eliminate the hassle associated with traditional track installation and design with Formatrac® Bendable Track. It can be bent by hand on the jobsite so installation is simple. Additionally, because of its flexible nature, Formatrac can accommodate virtually any design.

It's easy to ship and install.

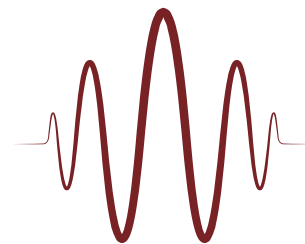
- Standard track lengths allow for virtually any design or radius bend required and eliminates the need for splices.
- Easily cut on-site by hand.
- Simple installation by snapping track into grid clips. Reduces install time by 40%.
- Versatility with virtually any ceiling type, including hard ceiling as well as tegular and flush ceiling.
- Formatrac doesn't require splices so your curtain will glide smoothly and quietly along the track.
- All four standard track lengths can ship via UPS ground, not bulk freight.
- End caps don't have to be removed to add or remove carriers.
- Four standard track lengths available: CE200008 - 8' (2.44m), CE200016 - 16' (4.88 m), CE200040 - 40' (12.19m) rolls and CE200105 - 105' (32m) rolls.
- Patented track and carriers slide quietly across track and have a peak load of over 50 lbs. (22 kg.). Check out our patents page online for more information.



*99% Recycled
Aluminum Core*



*Cut On-Site for
Reduced Waste*



*Over 50% decible noise
reduction compared to a
standard aluminum track*



Formatrac® Bendable Track Video

Watch the Formatrac® Video on inprocorp.com/clickeze and search "Formatrac® Bendable Track"



Friendship Village • Schaumburg, IL • Shield ShowerCurtain - Aloft Morning Grass, Formatrac® Bendable Track

FORMATRAC® BENDABLE TRACK

Because life demands flexibility.

Formatrac® easily bends by hand to allow for virtually any track configuration. View the video at Inprocorp.com/clickeze.

- No splices necessary.
- 99% recycled aluminum core and ABS (non-PVC) shell.
- Class A fire rating.
- Carriers can be added without end cap removal.

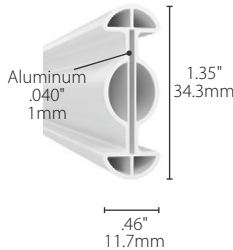


FORMATRAC®

- CE200008 - 8ft. (2.44m)
- CE200016 - 16ft. (4.88m)
- CE200040 - 40ft. (12.19m)
- CE200105 - 105ft. (32m)

Minimum recommended radius: 8" (20.3cm)

U.S. Patent D661,533 S and 8,533,910 B2



CARRIER WITH HOOK

CE2040

Peak Load, lb(f): 52.5 (23.8kg(f))
Carrier height: 2³/₈" (60.33mm)
Slide height: 1¹/₈" (28.6mm)

CLICKEZE | Case Study
PRIORITY SERVICES

Acoustic Enhancements at St. Joseph Medical Center
Case Study

Acoustic Issues

St. Joseph Medical Center is a multi-story, multi-specialty medical center located in a high-density urban area. The facility is a complex of several buildings, each with its own unique acoustic challenges. The facility is a complex of several buildings, each with its own unique acoustic challenges. The facility is a complex of several buildings, each with its own unique acoustic challenges.

DETAILS PROVIDED: Carrier Bar & Carrier

After the installation was complete, the project team conducted a series of acoustic measurements. The results showed a significant reduction in noise levels, particularly in the areas where the track was installed. The project team was very satisfied with the results and the ease of installation.

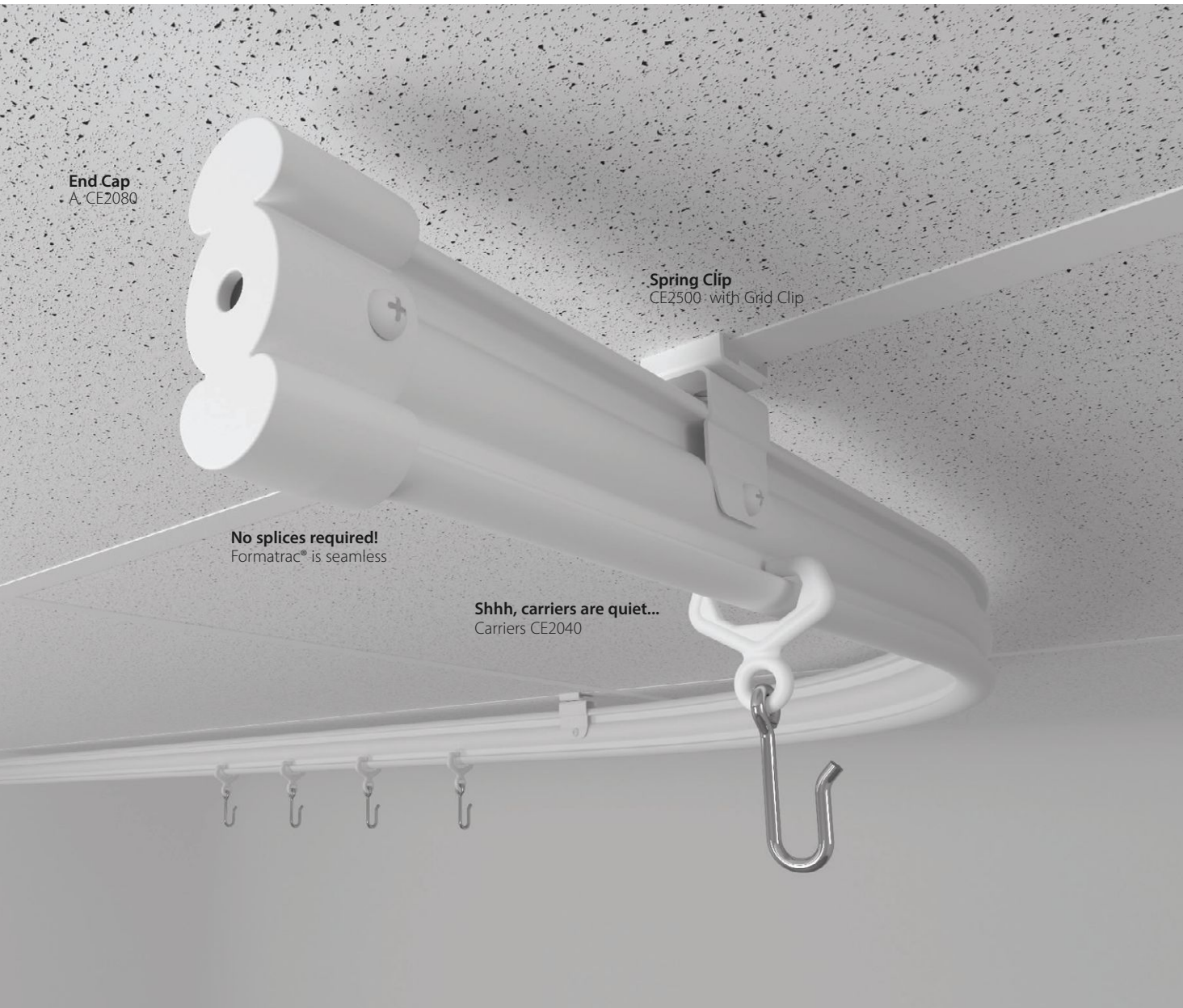
Room	Before	After
Operating Room	105 dBA	95 dBA
Exam Room	100 dBA	90 dBA
Waiting Room	95 dBA	85 dBA

The track was installed in the following rooms: Operating Room, Exam Room, Waiting Room, and Reception Area.

Formatrac® Bendable Track Case Study

Looking for more information on our Formatrac Bendable Track?

Visit the Formatrac page on inprocorp.com/clickeze to read a case study that discusses the acoustic benefits Formatrac can provide.



End Cap
A, CE2080

Spring Clip
CE2500 with Grid Clip

No splices required!
Formatrac® is seamless

Shhh, carriers are quiet...
Carriers CE2040



END CAPS

CE2080 - A. End Cap
CE2100 - B. Fixed End Cap (Shown)
Ensures that the curtain remains secured to the track end



SPRING CLIPS

CE2200
Recommended spacing:
24" (610mm) on center for straight track
18" (457mm) on center for track with bends



SPRING CLIPS WITH GRID CLIP

CE2500- for 1⁵/₁₆" (24mm) Grid
CE2500-916 for 9¹/₁₆" (14mm) Grid
Recommended spacing: 24" (610mm) on center for straight track
18" (457mm) on center for track with bends

WHISPER CUBE® CUBICLE TRACK

Shhh...

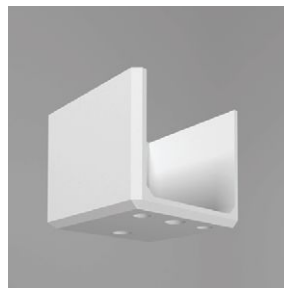
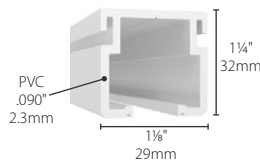
Whisper Cube® Tracks reduce noise during curtain movement, making it ideal for recovery rooms, birthing centers and critical care areas.

- Extruded white PVC.
- Class A Fire Rated.



WHISPER CUBE®

- CE900007 - 7ft. (2.13m)
- CE900008 - 8ft. (2.44m)
- CE900009 - 9ft. (2.74m)
- CE900012 - 12ft. (3.66m)
- CE900016 - 16ft. (4.88m)



END CAPS

- A. CE9080 Plastic End Cap (Shown above)
- B. CE9100 Plastic End Cap with hook (Shown right)



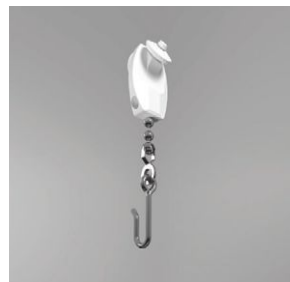
ALUMINUM SPLICE

- CE9050
Connects two sections of track together for a smooth transition.



SOLID HOOK CARRIER

- CE9025
Peak load, lb(f): 53.3 (24.2kg(f))
Carrier Height: 2 3/8" (60.33mm)
Wheel Height: 5/8" (15.88mm)



BALL + CHAIN CARRIER

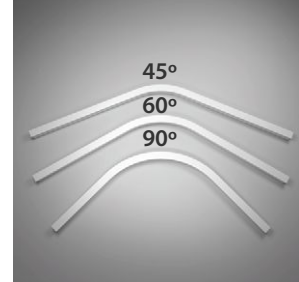
- CE9038
Peak load lb(f): 52.3 (23.7kg(f))
Carrier Height: 4" (102mm)
Wheel Height: 5/8" (15.88mm)



LIGATURE RESISTANT® POP OUT CARRIER

- CE9026-LR
Disengages at 10 lbs. (4.5kg) of pressure
Carrier Height: 2 7/8" (73mm)
Wheel Height: 5/8" (15.88mm)

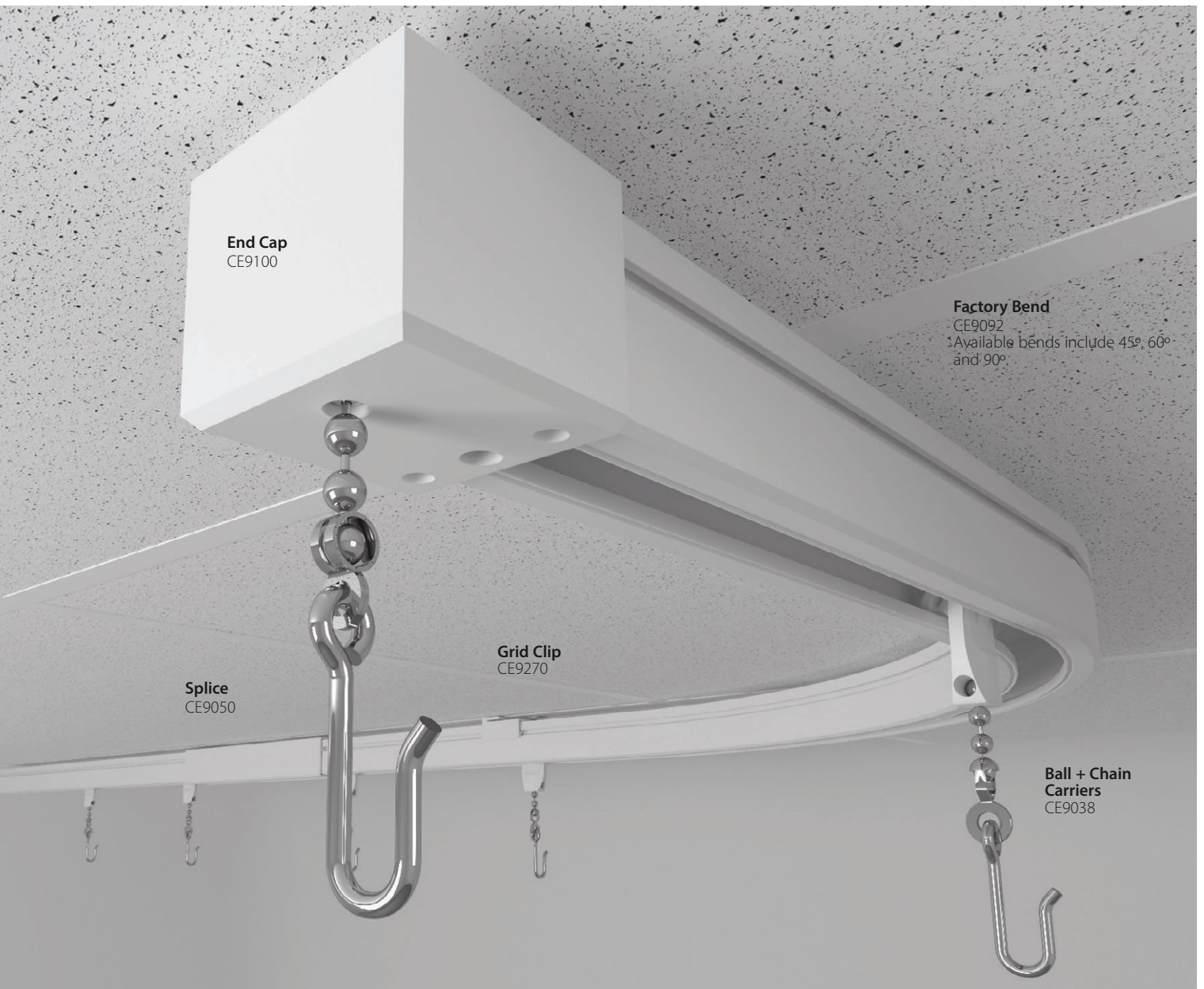
**While this product is designed for behavioral health applications, it does not guarantee patient safety.*



FACTORY BENDS

Available bends include 45°, 60° and 90°. Custom bends are unavailable.

- CE9042 - 45° Bend, 2'x2' (610mm x 610mm)
- CE9061 - 60° Bend, 1'x1' (305mm x 305mm)
- CE9092 - 90° Bend, 2'x2' (610mm x 610mm)
- CE9093 - 90° Bend, 3'x3' (914mm x 914mm)
- CE9094 - 90° Bend, 4'x4' (1.22m x 1.22m)



End Cap
CE9100

Factory Bend
CE9092
Available bends include 45°, 60° and 90°.

Splice
CE9050

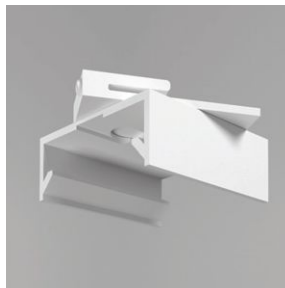
Grid Clip
CE9270

Ball + Chain Carriers
CE9038



FLUSH GRID CLIP

CE9270 - Allows for quick and easy installation of track to T-bar grid without hardware
For use with 1⁵/₁₆" grid
U.S. Patent 6,409,415 B1



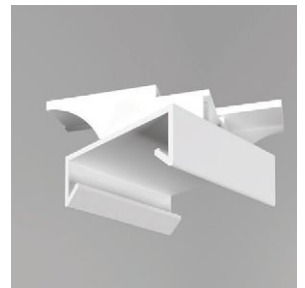
FLUSH SWIVEL CLIP

CE9272 - Used on bends only.
(1 swivel clip per bend)
For use with 1⁵/₁₆" grid
U.S. Patent 6,409,415 B1



TEGULAR GRID CLIP

CE9271 - Allows for quick and easy installation of track to T-bar grid without hardware
For use with 1⁵/₁₆" grid
U.S. Patent 6,409,415 B1



TEGULAR SWIVEL CLIP

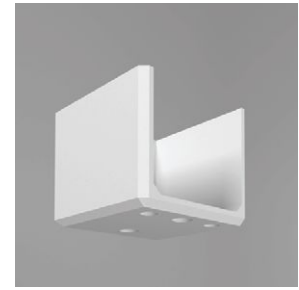
CE9273 Used on bends only
(1 swivel clip per bend)
For use with 1⁵/₁₆" grid
U.S. Patent 6,409,415 B1

ULTRA CUBE[®] CUBICLE TRACK

Extruded aluminum provides heavy duty strength.

Patented accessories make the Ultra Cube[®] Track versatile. Track is available in white or anodized finish. *The (-AN) on the part numbers denotes the anodized finish to the track and accessories.

- Extruded Aluminum
- White or Anodized
- 94% Recycled Content



END CAPS

CE9080(-AN)* - Plastic End Cap Available in white or gray (Shown above)

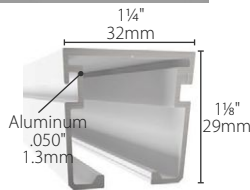
CE9100(-AN)* - Plastic End Cap with hook option (Shown right) Available in white or gray

CE9080M(-AN)* Metal End Cap Metal available in white or gray



ULTRA CUBE[®]

- CE800007(-AN)*** - 7ft. (2.13m)
- CE800008(-AN)*** - 8ft. (2.44m)
- CE800009(-AN)*** - 9ft. (2.74m)
- CE800012(-AN)*** - 12ft. (3.66m)
- CE800016(-AN)*** - 16ft. (4.88m)



ALUMINUM SPLICE

CE8051(-AN)*
Available in white or gray



RADIUS BEND

54" (1.37m) Radius Bend (shown)
CE80954(-AN)*
Size: 7' (2.13m) L

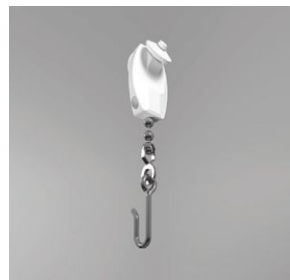
Continuous Bend
CE8000R(-AN)* (View at Inprocorp.com/clickeze)



SOLID HOOK CARRIER

CE9025

Peak load, lb(f): 53.3 (24.2kg(f))
Carrier Height: 2 3/8" (60.33mm)
Wheel Height: 5/8" (15.88mm)



BALL + CHAIN CARRIER

CE9038

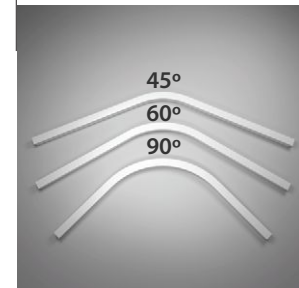
Peak load, lb(f): 52.3 (23.7kg(f))
Carrier Height: 4" (102mm)
Wheel Height: 5/8" (15.88mm)



LIGATURE RESISTANT[®] POP OUT CARRIER

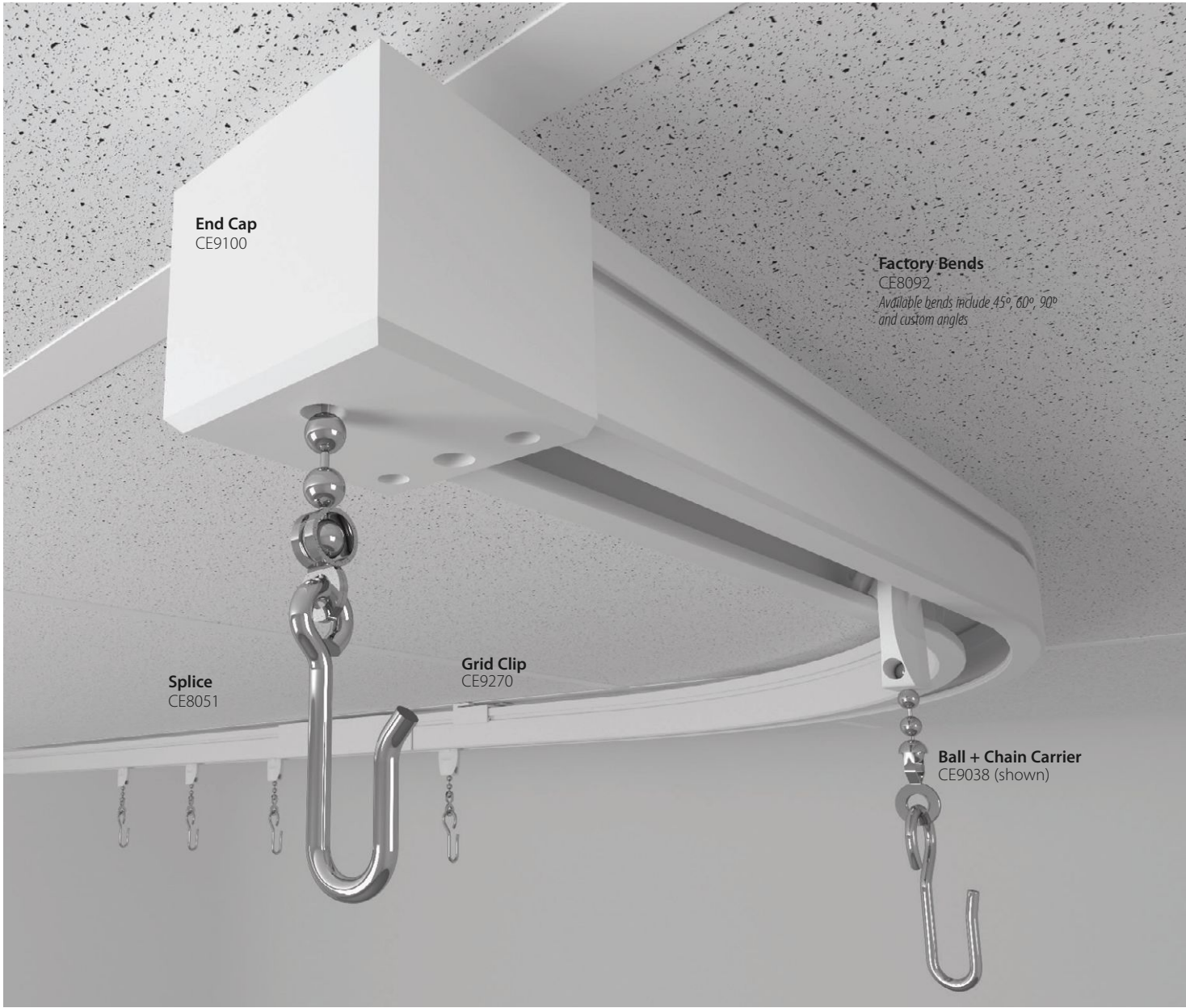
CE9026-LR

Disengages at 10 lbs. (4.54kg) of pressure
Carrier Height: 2 7/8" (73mm)
Wheel Height: 3/8" (15.88mm)
**While this product is designed for behavioral health applications, it does not guarantee patient safety.*



FACTORY BENDS

Available bends: 45° 60° & 90°. Custom angles available.
CE8042(-AN)* - 45° Bend, 2'x2' (610mm x 610mm)
CE8061(-AN)* - 60° Bend, 1'x1' (305mm x 305mm)
CE8092(-AN)* - 90° Bend, 2'x2' (610mm x 610mm)
CE8093(-AN)* - 90° Bend, 3'x3' (914mm x 914mm)
CE8094(-AN)* - 90° Bend, 4'x4' (1.22m x 1.22m)



End Cap
CE9100

Factory Bends
CE8092

Available bends include 45°, 60°, 90° and custom angles

Splice
CE8051

Grid Clip
CE9270

Ball + Chain Carrier
CE9038 (shown)

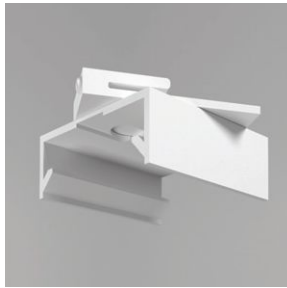


FLUSH GRID CLIP

CE9270

Allows for quick and easy installation of track to T-bar grid without hardware. For use with 1⁵/₁₆" grid.

U.S. Patent 6,409,415 B1

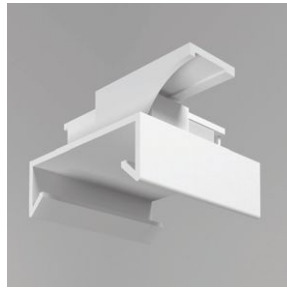


FLUSH SWIVEL CLIP

CE9272

Used on bends only. (1 swivel clip per bend) For use with 1⁵/₁₆" grid.

U.S. Patent 6,409,415 B1

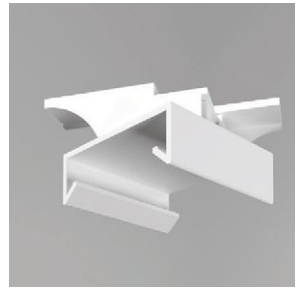


TEGULAR GRID CLIP

CE9271

Allows for quick and easy installation of track to T-bar grid without hardware. For use with 1⁵/₁₆" grid.

U.S. Patent 6,409,415 B1



TEGULAR SWIVEL CLIP

CE9273

Used on bends only (1 swivel clip per bend) For use with 1⁵/₁₆" grid.

U.S. Patent 6,409,415 B1

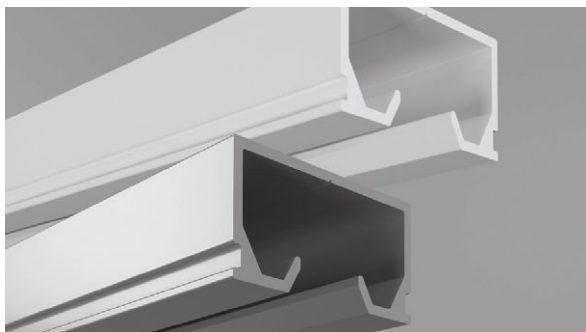
OPTITRAC[®] CUBICLE TRACK

Anything but average.

Optitrac[®] is engineered for optimum performance, effortless movement and meets most common track specifications.

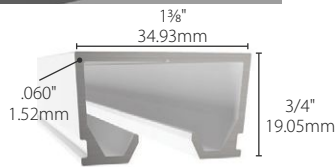
*The (-AN) on the part numbers denotes the anodized finish to the track and accessories.

- Extruded Aluminum
- 94% recycled content
- White or Anodized



OPTITRAC[®]

- CE500007(-AN)* - 7 ft. (2.13m)
- CE500008(-AN)* - 8 ft. (2.44m)
- CE500009(-AN)* - 9 ft. (2.74m)
- CE500012(-AN)* - 12 ft. (3.66m)
- CE500016(-AN)* - 16 ft. (4.88m)



END CAPS

- CE5080(-AN)* - Plastic End Cap (Shown) Available in white or gray
- CE5100(-AN)* - Removable End Cap (Shown Right) Available in white or gray (Carrier not included)
- CE5080M(-AN)* - Metal End Cap Metal available in white or gray



ALUMINUM SPLICE

- CE5050(-AN)* Available in white and gray



SOLID HOOK SPOOL CARRIER

- CE6030
- Peak Load, lb(f): 25.3 (11.47kg(f))
- Carrier Height: 1-1/2" (38.1mm)
- Wheel Height: 1/16" (1.746mm)
- Can be used with Whisper and Ultra Cube Track Systems.



SPOOL CARRIER

- CE5040
- Peak load, lb(f): 53.1 (24.01kg(f))
- Carrier Height: 2 5/8" (66.7mm)
- Wheel Height: 1/16" (1.75mm)
- Can be used with Whisper and Ultra Cube Track Systems.



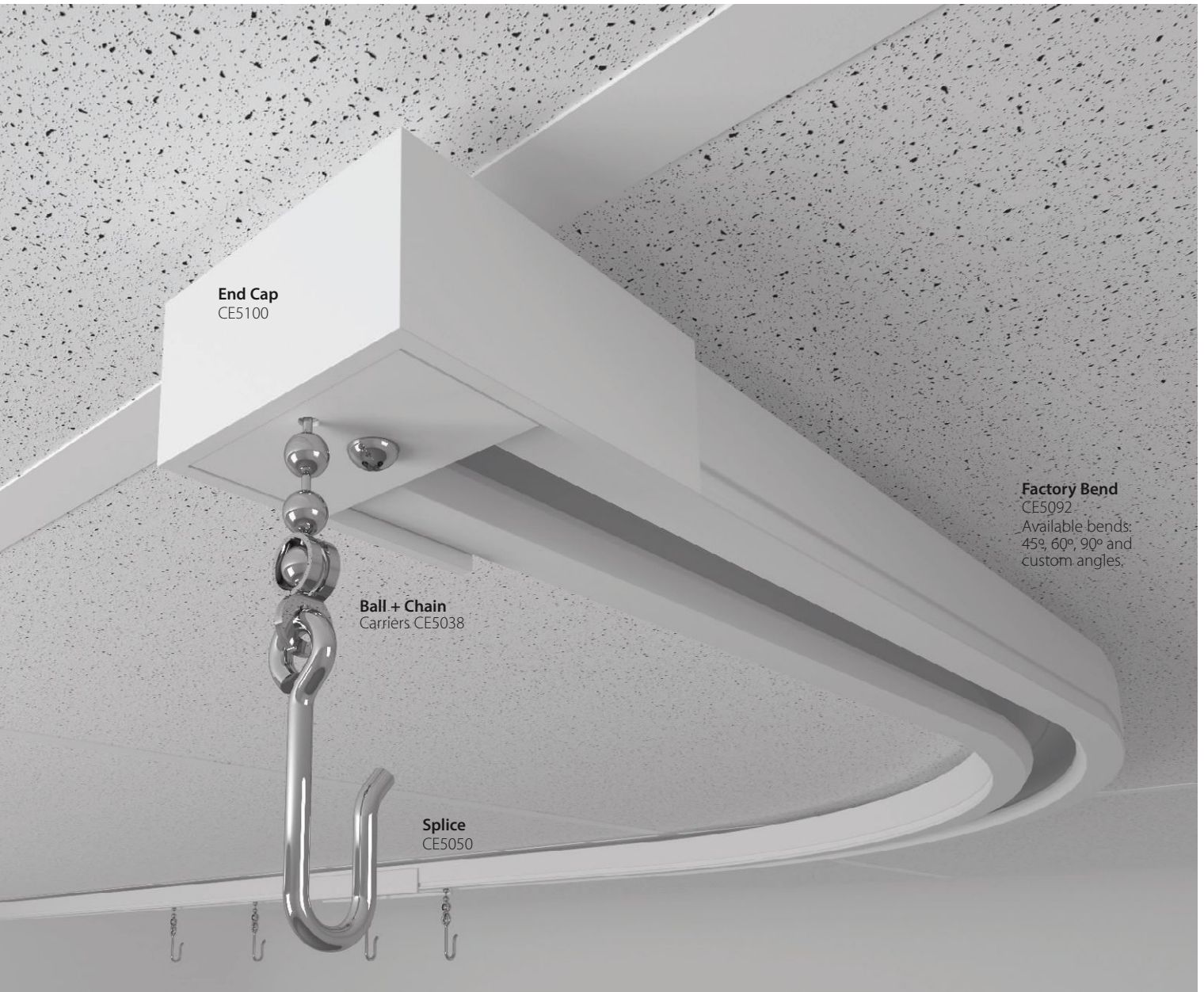
BALL + CHAIN CARRIER

- CE5038
- Peak load, lb(f): 46.9 (21.27kg(f))
- Carrier Height: 2 1/2" (63.5mm)
- Wheel Height: 1/2" (12.7mm)



LIGATURE RESISTANT[®] POP OUT CARRIER

- CE6026-LR
- Disengages at 10 lbs. (4.54kg) of pressure
- Carrier Height: 2 1/2" (63.5mm)
- Wheel Height: 3/8" (15.87mm)
- *While this product is designed for behavioral health applications, it does not guarantee patient safety.



Factory Bend
CE5092
Available bends:
45°, 60°, 90° and
custom angles.

End Cap
CE5100

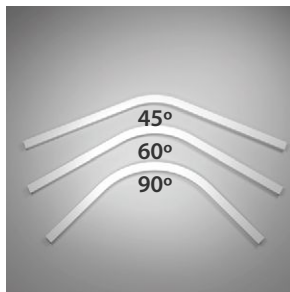
Ball + Chain
Carriers CE5038

Splice
CE5050



BENDS

CE50954(-AN)* 54" (1.37m)
Radius Bend (shown)
Size: 7' (2.13m) L
CE5000R(-AN)*
Continuous Bend



FACTORY BENDS

Available bends: 45° and 90°.
Custom angles available.
CE5042(-AN)* - 45° Bend,
2'x2' (610mm x 610mm)
CE5062(-AN)* - 60° Bend,
2'x2' (610mm x 610mm)
CE5092(-AN)* - 90° Bend,
2'x2' (610mm x 610mm)
CE5093(-AN)* - 90° Bend,
3'x3' (.91m x .91m)
CE5094(-AN)* - 90° Bend,
4'x4' (1.22m x 1.22m)



CEILING SPACER

CE101045
Hides hardware that is
exposed when mechanically
fastening track to a ceiling
grid. Also provides adequate
spacing between track and
tegular ceiling tile.
¼" (6.35mm) h x ½" (12.7mm) w

SUSPENDED TRACK

Don't let ceiling height hinder your privacy.

Reduce excess curtain costs for rooms with high ceilings without compromising patient privacy. Suspended track is available with our Ultra Cube® and Optitrac® systems.



WALL MOUNT BRACKET

CE5082(-AN) Zinc-plated option available (white shown)



HARD CEILING SUPPORT BRACKETS

Includes ceiling and track brackets. Available in white and gray (-AN)
CE8500(-AN) - Ultra Cube® System
CE5500(-AN) - Optitrac® System
Posts sold separately.



SLOPED CEILING SUPPORT BRACKETS

Includes ceiling and track brackets. Available in white and gray (-AN)
CE8400(-AN) - Ultra Cube® System
CE5400(-AN) - Optitrac® System
Posts sold separately.



FLUSH SUSPENDED

CE9274(-AN) Ultra Cube®
CE5274(-AN) Optitrac®
 Includes Grid Clip and bracket. For 1 5/16" grid.
Post sold separately.



TEGULAR SUSPENDED

CE9275(-AN) Ultra Cube®
CE5275(-AN) Optitrac®
 Includes Grid Clip and bracket. For 1 5/16" grid.
Post sold separately.



POSTS

CE830008(-A)* Supports suspended track from a ceiling. Available in white baked acrylic enamel finish or anodized. Sold in 8' (2.44m) lengths. *Post sold separately.*
 (-AN)* - Available in anodized finish option



L-BRACKET

CE8622-ASM Use for each wall touch to reduce track movement

IV SYSTEMS

Keep tubes and cords out of the way.

Bag Holders raise and lower without disturbing needles and tubes or causing patient discomfort. The IV Carriages have an enhanced design that reduces jarring as they glide through curves and bends in the track. IV systems are available with our Ultra Cube® and Optitrac® Systems.



IV FIVE BAG HOLDER

CE9505

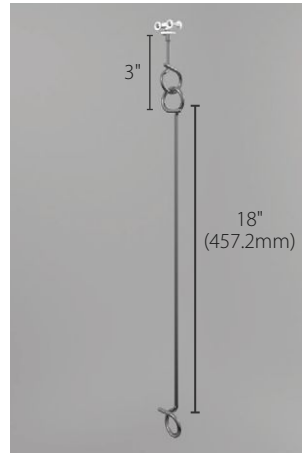
Open length: 41.5" (1.05m)
Closed length: 27" (685mm)
Works with any track system.



IV NINE BAG HOLDER

CE9509

Open length: 41.5" (1.05m)
Closed length: 27" (685mm)
Works with any track system.



IV CARRIAGE EXTENDERS

Allows you to accommodate high ceilings. Extenders come standard with Ultra Cube and Optitrac IV Carriages. (Shown: 21" (533mm) length for a 9 1/2' (2.9m) Ceiling) Drop indicates combined length of carriage and extension. Hooks available for five ceiling heights.



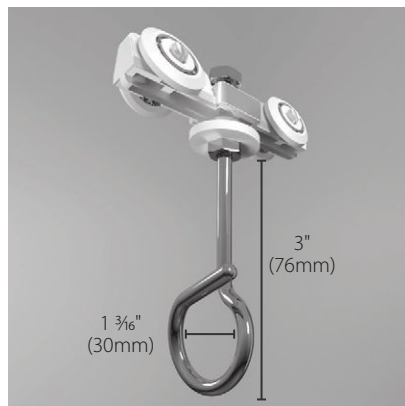
STATIONARY IV PENDANT

Attaches directly to hard ceilings
CE950408 - 8' (2.45m) (shown)
CE950486 - 8'6" (2.59m)
CE950409 - 9' (2.74m)
CE950496 - 9'6" (2.9m)
CE950410 - 10' (3.05m)
Extender available for five ceiling heights. Post sold separately.



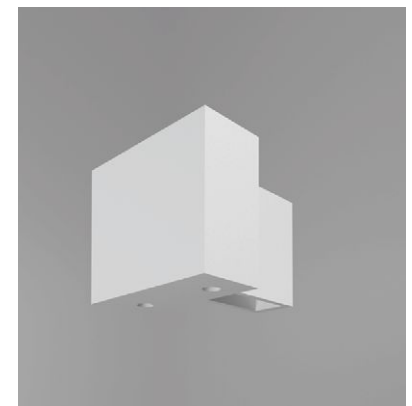
IV CARRIAGE: OPTITRAC®

Comes standard with Carriages over 8'
CE550208 - 8' (2.45m) ceiling/3" (76mm) drop (shown)
CE550286 - 8'6" (2.59m) ceiling/9" (229mm) drop
CE550209 - 9' (2.74m) ceiling/15" (381mm) drop
CE550296 - 9'6" (2.9m) ceiling/21" (533mm) drop
CE550210 - 10' (3.05m) ceiling/27" (686mm) drop
Drop includes combined length of carriage & extension



IV CARRIAGE: ULTRA CUBE®

CE950208 - 8' (2.45m) ceiling/3" (76mm) drop (shown)
CE950286 - 8'6" (2.59m) ceiling/9" (229mm) drop
CE950209 - 9' (2.74m) ceiling/15" (381mm) drop
CE950296 - 9'6" (2.9m) ceiling/21" (533mm) drop
CE950210 - 10' (3.05m) ceiling/27" (686mm) drop
Drop includes combined length of carriage & extension



IV END CAPS

CE9501(-AN)
Available for Ultra Cube® track only.
(-AN) - Available in white or gray anodized finish

CUBICLE CURTAINS + TRACK

SAFETY LOADING UNIT

Fast, easy and no need for ladders.

A safer, easier solution for changing cubicle curtains because no ladders are required. The Safety Loading Unit can easily be retrofitted onto existing Clickeze Optitrac® or Ultra Cube® track or many of the track systems on the market. By lowering the cubicle track, you can reduce curtain change-out time by up to 25%.

U.S. Patent 8,533,911 B2



WALL MOUNT

CE5920 - Optitrac® Safety Loading Unit - Wall Mount
CE8920 - Ultra Cube® Safety Loading Unit - Wall Mount
Custom sizes available.

Includes hinge, latch, wall mount bracket and 5' track (1.52m)



POST MOUNT

CE5921 - Optitrac® Safety Loading Unit - Post Mount
CE8921 - Ultra Cube® Safety Loading Unit - Post Mount
Custom sizes available.

Includes hinge, latch, post mount bracket and 5' track (1.52m)



OPERATING WAND

CE8521 - Operating Wand
Use one wand for every 10 units. 42" (1.06m) length



SOLID HOOK SPOOL CARRIER

CE6030 - Solid Hook Spool Carrier (See Optitrac)
Peak load: 25.3 lb(f) (11.48kg(f))



Lift curtain



Rotate to lock



Remove Wand

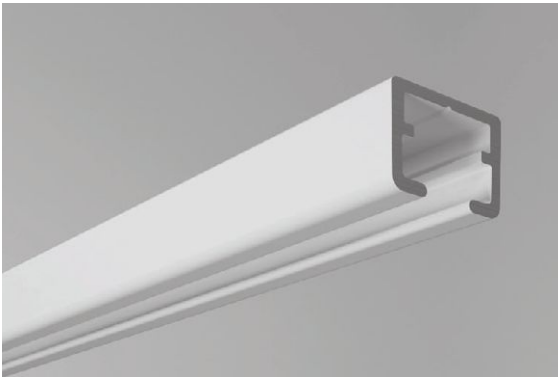


NANOTRAC[®] CUBICLE TRACK

Small in size. Big in performance.

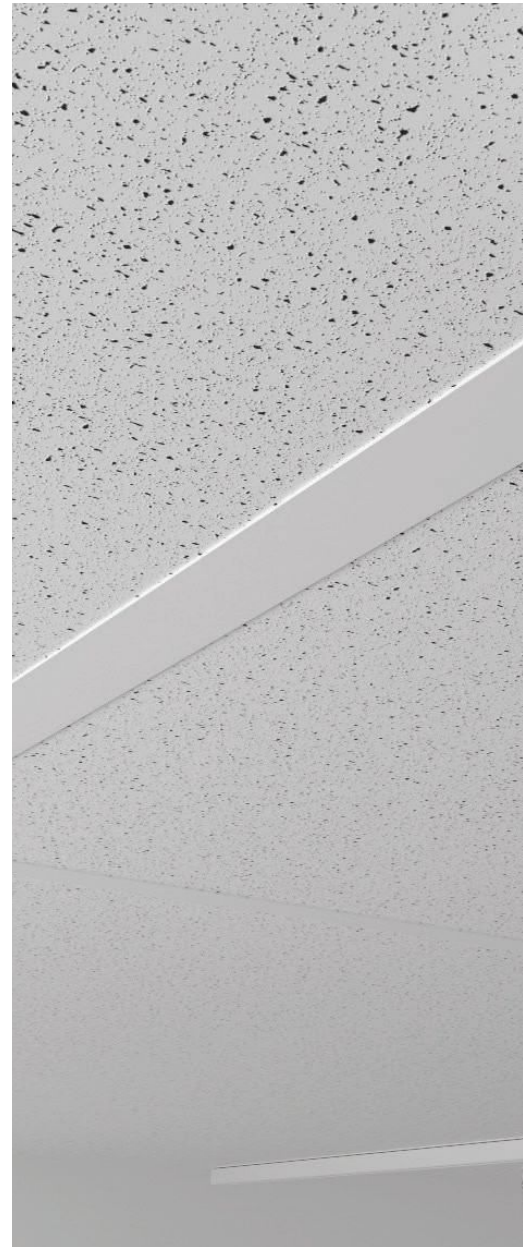
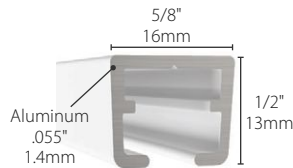
Sleek, simple and compact design is ideal for narrow profiles such as changing room areas.

- Extruded aluminum with a white baked acrylic enamel finish.
- 94% recycled content.



NANOTRAC[®]

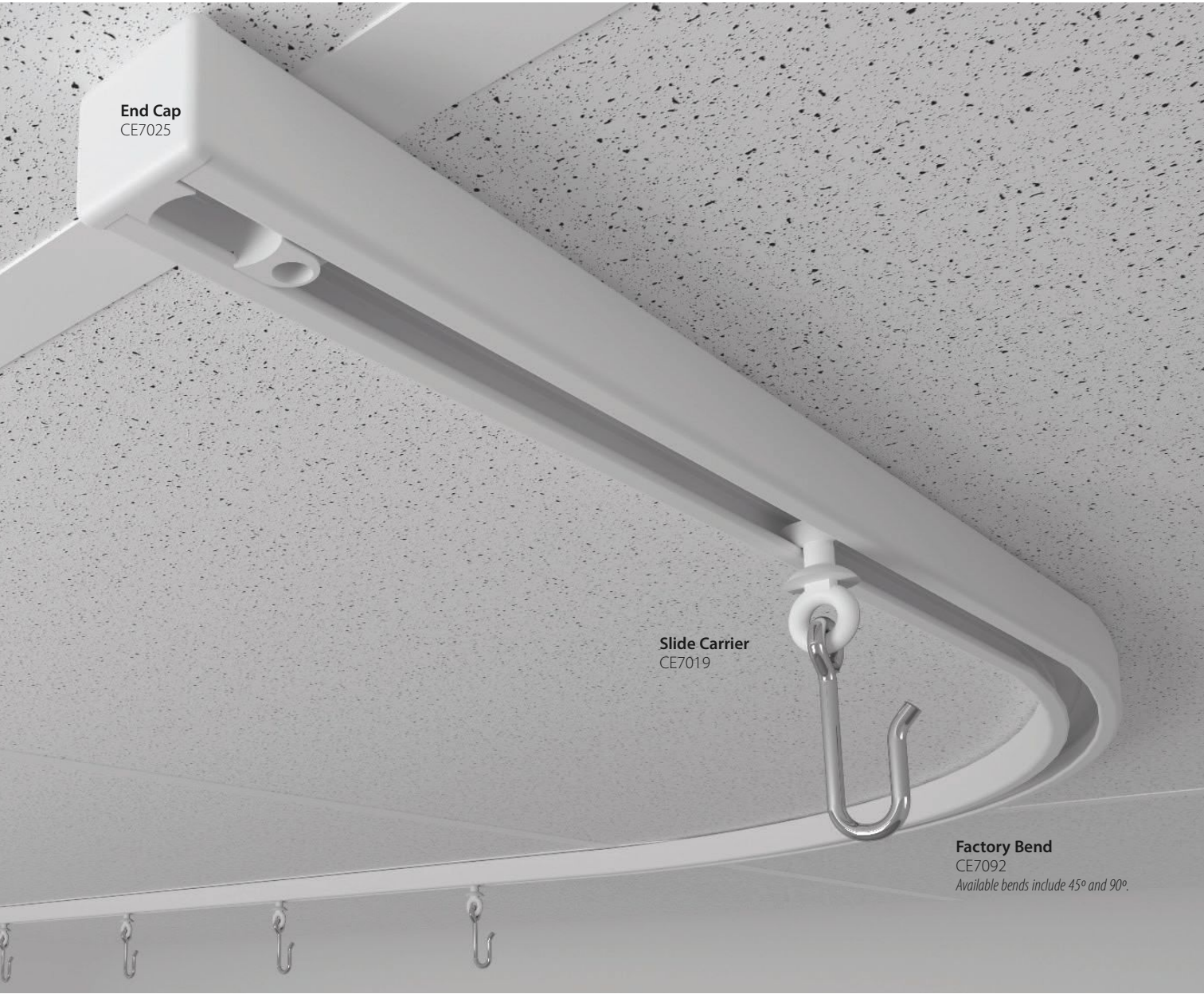
CE700008 - 8 ft. (2.44m)
CE700016 - 16 ft. (4.88m)



END CAPS

CE7025

End caps keep the carriers and curtain from falling off the track.



End Cap
CE7025

Slide Carrier
CE7019

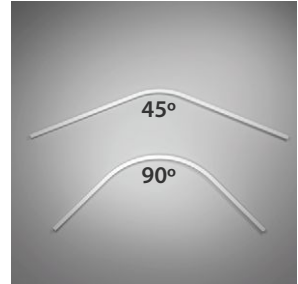
Factory Bend
CE7092
Available bends include 45° and 90°.



SPLICE
CE7017
Connects two sections of track together for a smooth transition.



SLIDE CARRIER
CE7019
Available in packs of 10 only.
Peak load: 51.7 lb(f) (23kg(f))
Carrier Height: 2" (51mm)
Wheel Height: 5/16" (7.9mm)



FACTORY BENDS
CE7042 - 45° Bend, 2'x2'
(610mm x 610mm)
CE7092 - 90° Bend, 2'x2'
(610mm x 610mm)
Available bends include 45° and 90°. Custom bends unavailable.

CURTAIN OPTIONS + ACCESSORIES

Customize your privacy curtains.

From standard construction to banding or snaps, our Clickeze® product experts will help you choose your sewing option and accessories.

Sewing Options



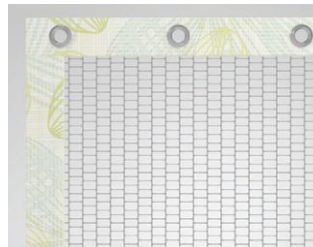
STANDARD CONSTRUCTION

Standard Construction - Mesh exposed on reverse side of curtain.



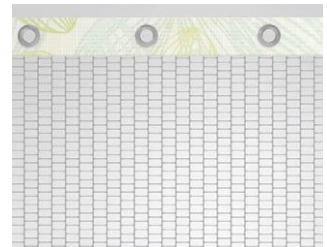
HIDDEN MESH

Concealed on reverse side of cubicle curtain.
Available upon request.



FRAMING

Fabric border is sewn around top and sides of curtain.
Available upon request.



BANDING

Fabric border is sewn on top of curtain.
Available upon request.

Curtain Tie Backs



VELCRO TIE BACKS

Fabric tie back includes 1" (2.54cm) white velcro on each end. Length: 3" (76mm) W x 18" (457mm) L.



TIE BACKS WITH GROMMET

Length: 3" (76mm) W x 18" (457mm) L.



BEADED PLASTIC CHAIN

CE9251 - Length: 48" (1.22m)



BEADED NICKEL-PLATED CHAIN

CE9252 - Length: 48" (1.22m)



Optitrac® Cubicle Track and Daisy Privacy Curtain



CLEAR SNAPS

Clear snaps are located along side of cubicle curtain to be snapped to other curtain panels.
Available upon request.



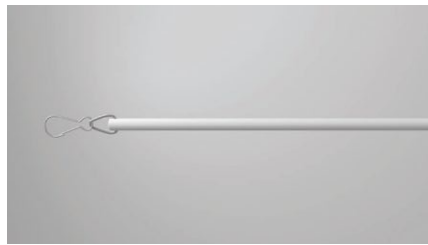
SNAP TAPE

Snap tape is on top, sides (or both) of cubicle curtain for easy change-outs. Snap tape is hidden between mesh and fabric panels.
Available upon request.



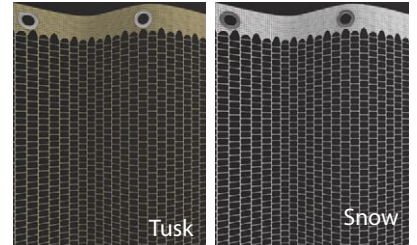
ADJUSTABLE DROP CHAIN

Use Adjustable Drop-Chain to accommodate various height conditions and for air/steam circulation. Use to raise and lower curtain height. 24" (610mm) long.
CE9039 - White
CE9039-24 - Nickel Plated



CLIP-ON CURTAIN WANDS

Pulls curtain along track instead of by the curtain, reducing wear.
CE100698 - 48" (1.22mm) length
CE100697 - 36" (910mm) length
CE100699 - 30" (760mm) length
CE9224 - 24" Adjustable Chain Wand (610mm) length



EZE•MESH® COLORS

Material: 100% Nylon Mesh. Available in Tusk and Snow. Optional Antimicrobial Mesh available.
Size: #50 Mesh (1/2" (12mm) Mesh Size)
Heights available: 12" (30.48cm), 20" (50.80cm), 22" (55.88cm), 28" (71.12cm), 36" (91.44cm) *Custom sizes available.*
EZE•Mesh™ Patent 6,474,396 B1

EZE-SWAP[®] CUBICLE CURTAIN SNAP PANEL SYSTEM

Save time and money with EZE-Swap[®] Panels.

- No ladders are needed for curtain change-out. Simply unsnap the soiled panel and replace with maintenance stock.
- Panels easily snap in place and can be configured into any length to meet your project's needs.
- Continuous mesh panels are made to order, ensuring you only pay for what you need.
- Available in virtually any cubicle curtain fabric, including our Shield by Panaz[®] stain resistant fabrics for 24/7 protection.
- Standard fabric panels are 66" (1.68m) wide x 66" (1.68m) high, but are also available in custom sizes.
- Standardize with one panel size for your entire facility.
- EZE-Swap Cubicle Curtain Snap Panels are even compatible with some existing snap panel systems.
- Optional antimicrobial* mesh available to inhibit the growth of mold and mildew.

**When laundered per manufacturer's instructions.*



DISPOSABLE CURTAINS

For temporary use in the most sensitive areas.

Disposable Curtains are made from 100% non-woven polypropylene and include a polyester mesh and Velcro tie back. They are accordion folded for easy storage and handling. These curtains meet NFPA 701 Fire Retardant Test. They are individually packaged in plastic sleeves to ensure sanitation and are in stock, and ready to ship.

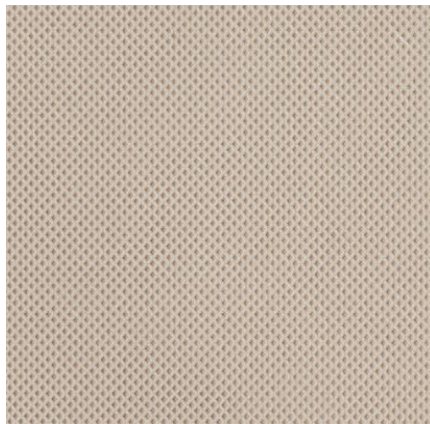


CUBICLE CURTAINS + TRACK



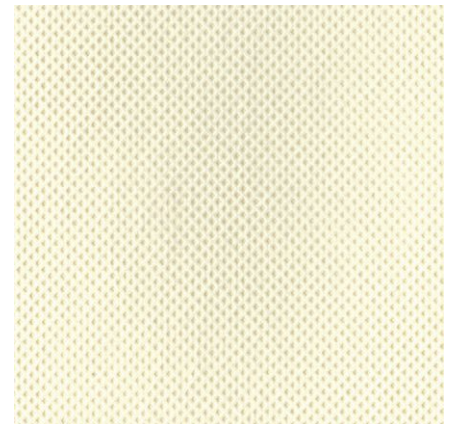
PERIWINKLE

CE-BZ9493C-PW For a 9' (2.74m) ceiling
94"(2.39m)W x 93"(2.36m)H with 26" Mesh
CE-BZ9481C-PW for an 8' (2.44m) ceiling
94"(2.39m)W x 81"(2.06m)H with 20" Mesh
Sold in cases of 12



TAUPE

CE-BZ9493C-TP For a 9' (2.74m) ceiling
94"(2.39m)W x 93"(2.36m)H with 26" Mesh
CE-BZ9481C-TP for an 8' (2.44m) ceiling
94"(2.39m)W x 81"(2.06m)H with 20" Mesh
Sold in cases of 12



CREAM

CE-BZ9493C-CR For a 9' (2.74m) ceiling
94"(2.39m)W x 93"(2.36m)H with 26" Mesh
CE-BZ9481C-CR for an 8' (2.44m) ceiling
94"(2.39m)W x 81"(2.06m)H with 20" Mesh
Sold in cases of 12

IN STOCK FABRICS

When you need curtains in a hurry.

Clickeze® Privacy Systems carry high inventory levels of some of our best-selling fabrics shown below. Our in-house manufacturing capabilities enable us to make custom curtains and get them to you fast! In fact, curtains made with the fabrics shown below will ship within five working days*. We also offer disposable curtains that are ready to ship within 24 hours.

**Maximum order size for 5 day shipping is 20 curtains made from the fabrics below. Lead times vary for products not in stock, colors and patterns are subject to availability. Contact your Clickeze sales rep for specific lead times.*

QUICK SHIP

CUBICLE CURTAINS

**Note: Shield by Panaz® Classic fabric can also be used as shower curtains.*



Shield by Panaz®
Canopy | Earth*



Shield by Panaz®
Tudor | Moccasin

Shield by Panaz®
Lancaster | Cream*

Simplicity
Chestnut

Simplicity
Taupe

Simplicity
Nutmeg

Simplicity
Willow

Simplicity
Buff

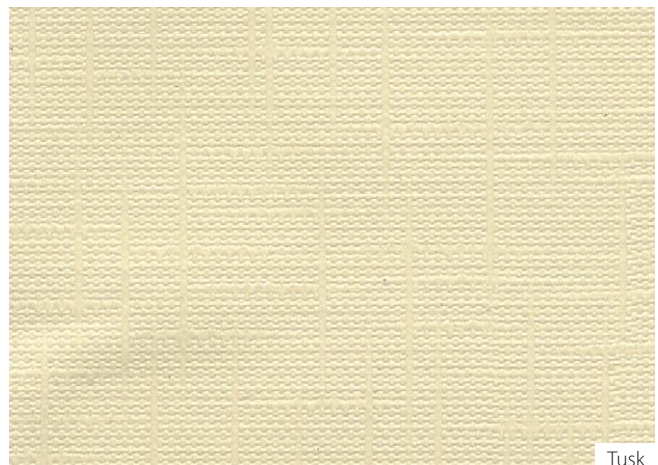
Simplicity
Blue Moon

Simplicity
Natural

SUPER BIO STAT

SHOWER CURTAINS

Multi-Purpose Vinyl



Tusk



White

Blue

Butterscotch

24-HOUR CURTAINS

Ready to ship within 1 day.

For those times when deadlines change, we offer pre-made cubicle curtains that ship fast. Available in limited colors and standard sizes, products in the 24-Hour Curtains offer ship within 24 hours. Please Visit Inprocorp.com to order.

SIMPLICITY

CUBICLE CURTAINS

8' (2.44m) ceiling: 68" (172.72cm) W x 81" (205.7cm) H, includes 20" (50.8cm) mesh

9' (2.74m) ceiling: 68" (172.72cm) W x 93" (236.2cm) H, includes 22" (55.8cm) mesh

Woven: 100% Polyester with VISA® and antimicrobial finish

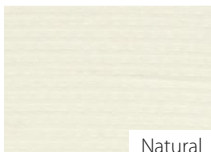
Mesh: Snow (white)

No minimum order quantities. Colors and patterns are subject to availability.

24



Nutmeg



Natural



Willow



Blue Moon

SUPER BIO STAT

SHOWER CURTAINS

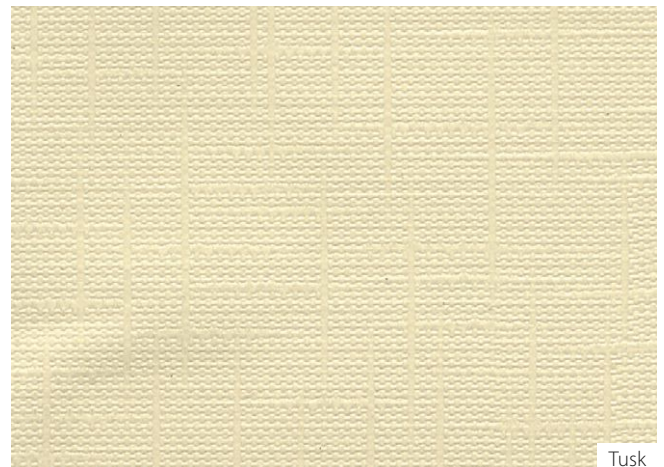
Sizes: 42" (106.7cm) W x 70" (177.8cm) H or 72" (182.88cm) W x 70" (177.8cm) H

Repeat: 0"

Multi-purpose vinyl

No minimum order quantities. Colors and patterns are subject to availability.

24



Tusk



White



Butterscotch



Froedtert Hospital *Milwaukee, Wisconsin*

The Project

A hospital-wide swap-out of all privacy curtains. Zimmerman Design Group, Milwaukee, provided guidance to the hospital in selecting and standardizing on the fabric chosen.

Inpro® Products Used

Clickeze® Privacy Systems

1,228 curtains (over 4.6 miles) of Shield by Panaz® fabric — Tudor pattern in Sand Dune colorway, paired with Eze-Mesh™ in Snow color.





FABRIC OVERVIEW

Design options to suit your decor.

Clickeze® has compiled a beautiful offering of standard, program fabrics from leading vendors for use as cubicle curtains, shower curtains, window treatments and bedspreads. But it doesn't stop there. If we don't have what you are looking for, we can also purchase from most fabric mills to get you the exact fabric you prefer. If you have your own material, we are happy to work with that as well.



SHIELD BY PANAZ®

- 40 **NEW! Follow Me**
- 40 **NEW! Framework**
- 40 **NEW! Full Circle**
- 41 Abloom
- 41 Aloft
- 41 Array
- 42 Bristol
- 42 Brushstroke
- 42 Bubbles
- 43 Canopy
- 43 Chelsea
- 43 Dorchester
- 44 Elegant Leaf
- 44 Fusion
- 44 Gentry
- 45 Inspire
- 45 Kensington
- 45 Lancaster
- 46 Lea
- 46 Mayfair
- 46 Nottingham
- 47 Ovation
- 47 Rapids
- 47 Ripple
- 48 Thicket
- 48 Tudor



PLATINUM \$\$\$\$

- 50 **NEW! Reflection**
- 50 Alfresco
- 50 Audubon
- 51 Blissful
- 51 Boulevard
- 51 Colorblock
- 52 Evolution
- 52 Gradual
- 52 Heritage
- 53 Interval
- 53 Mesa
- 53 Riverstone 2
- 54 Sunset
- 54 Transform
- 54 Vinery



GOLD \$\$\$

- 56 **NEW! Sequence**
- 56 **NEW! Inclination**
- 56 Boondocks
- 57 Daisy
- 57 Illuminate
- 57 Incognito
- 58 Island
- 58 In The Groove
- 58 In The Moment
- 59 Revolve
- 59 Sun Prairie 2
- 59 Tangled
- 59 Whitney



S

SILVER \$\$

- 61 **NEW! Canyon**
- 61 **NEW! Optic**
- 61 Fossil
- 62 Galaxy
- 62 Gravity
- 62 Lattice
- 63 Lineage
- 63 Pebbles
- 63 Scenic
- 64 Shanty
- 64 Terrace
- 64 Wild Ivy

B

BRONZE \$

- 66 Boardwalk
- 66 Florence
- 66 Madison
- 67 Orbitz
- 67 Patio
- 67 Simplicity
- 68 Tic Tac
- 68 Windsor

D

DIM OUT

- 70 Cambridge
- 70 Kozmo
- 70 Midnight
- 71 Monet
- 71 Serene
- 71 Shadow

VENDORS

- ArcCom
- Architex
- Carnegie
- CF Stinson
- Coral
- Design Craft
- DesignTex
- Fabricut
- Guilford of Maine
- Integra
- Interspec
- Knoll
- Maharam
- Master Fabrics
- Mayer Fabrics
- Momentun
- Pallas
- Panaz
- Robert Allen
- Tanatex
- Wolf Gordon
- And Many More

Stain resistant and liquid repellent

SHIELD BY PANAZ[®] FABRICS

Our obsessive search for superior protective material brought us to Shield by Panaz[®] fabrics. Utilizing silane-based technology, Shield by Panaz[®] fabrics have been tested and proven to be permanently antimicrobial* to inhibit the growth of mold and mildew. Additionally, these fabrics repel liquids and are highly resistant to most stains. These properties make them ideal for cubicle curtains, shower curtains and window treatments.

**When laundered per manufacturer's instructions.*





STAIN
RESISTANT



LIQUID
REPELLENT



ANTIMICROBIAL
PROPERTIES

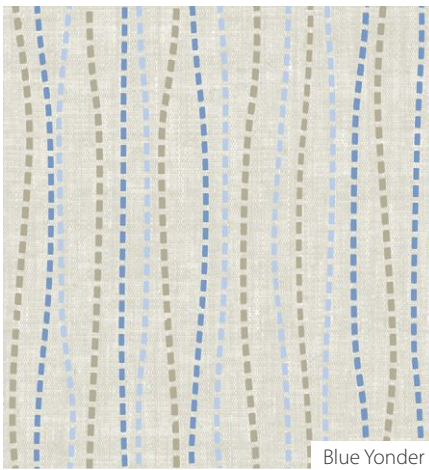


shield[™] *Classic*
protective intelligent fabric
by Panaz®

CUBICLE CURTAINS + TRACK

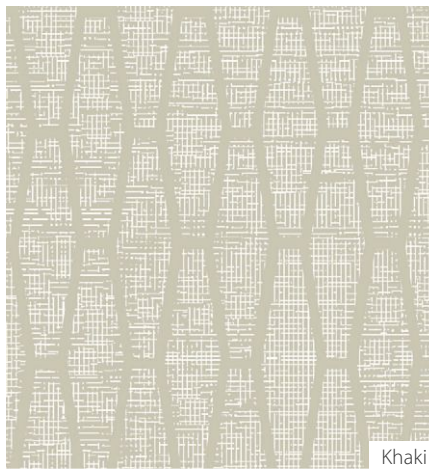
NEW! FOLLOW ME

Width: 72" (182.88cm) fabric
Repeat: 12.6" (32cm) H x 12.1" (30.66cm) V
Shown: Vertically Seamed
Non-woven: 100% flame retardant polyester modified with nano-molecular, anti-bacterial and water repellent technologies



NEW! FRAMEWORK

Width: 72" (182.88cm) fabric
Repeat: 12.6" (32cm) H x 12.1" (30.66cm) V
Shown: Railroaded
Non-woven: 100% flame retardant polyester modified with nano-molecular, anti-bacterial and water repellent technologies



NEW! FULL CIRCLE

Width: 72" (182.88cm) fabric
Repeat: 12.6" (32cm) H x 12.2" (30.99cm) V
Shown: Railroaded
Non-woven: 100% flame retardant polyester modified with nano-molecular, anti-bacterial and water repellent technologies



ABLOOM

Width: 72" (182.88cm) fabric
Repeat: 25.2" (64cm) H x 24.15" (61.34cm) V
Shown: Railroaded
Non-Woven: 100% flame retardant polyester modified with molecular antimicrobial and liquid repellent technologies.



Waterscape



Stone



Auburn



Eucalyptus



Bamboo



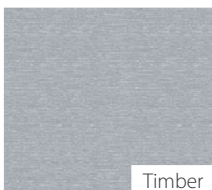
Pistachio

ALOFT

Width: 72" (182.88cm) fabric
Repeat: 0" (0cm) H x 0" (0cm) V
Shown: Railroaded
Non-Woven: 100% flame retardant polyester modified with molecular antimicrobial and liquid repellent technologies.



River Water



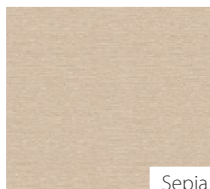
Timber



Butternut



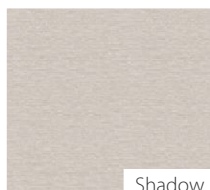
Teal Mist



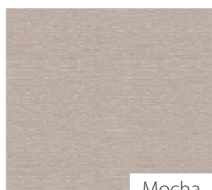
Sepia



Morning Grass



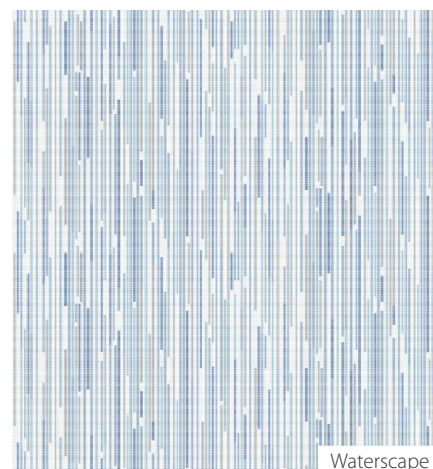
Shadow



Mocha

ARRAY

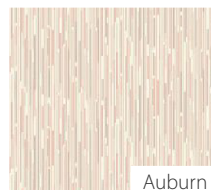
Width: 72" (182.88cm) fabric
Repeat: 25.2" (64cm) H x 24.15" (61.34cm) V
Shown: Railroaded
Non-Woven: 100% flame retardant polyester modified with molecular antimicrobial and liquid repellent technologies.



Waterscape



Stone



Auburn



Eucalyptus



Bamboo



Pistachio

BRISTOL

Width: 57" (145cm) fabric
Repeat: 25.2" (64cm) H
Shown: Vertically Seamed
Non-Woven: 100% flame retardant polyester modified with molecular antimicrobial and liquid repellent technologies.



Meadow



Sunrise



Merlot



Vista



Island

BRUSHSTROKE

Width: 72" (182.88cm) fabric
Repeat: 25.2" (64cm) H x 72" (182.88cm) V
Shown: Railroaded
Non-Woven: 100% flame retardant polyester modified with molecular antimicrobial and liquid repellent technologies.



Nectar



Aloe



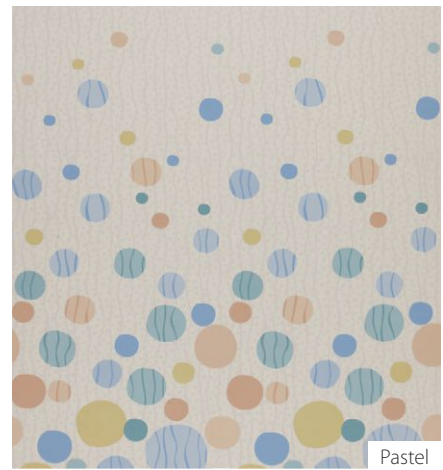
Pewter



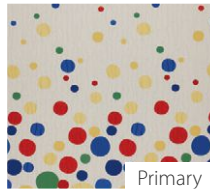
Lilac

BUBBLES

Width: 72" (182.88cm) fabric
Repeat: 25.2" (64cm) H x 72" (182.88cm) V
Shown: Railroaded
Non-Woven: 100% flame retardant polyester modified with molecular antimicrobial and liquid repellent technologies.



Pastel



Primary

CANOPY

Width: 72" (182.88cm) fabric

Repeat: 27.2" (69.1cm) H x
72" (182.88cm) V

Shown: Railroaded

Non-Woven: 100% flame retardant polyester
modified with molecular antimicrobial and liquid
repellent technologies.



Jungle



Breeze



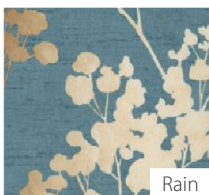
Earth



Sunlight



Eclipse



Rain

CHELSEA

Width: 57" (145cm) fabric

Repeat: 26.2" (66.55cm) H x 25.2" (64cm) V

Shown: Vertically Seamed

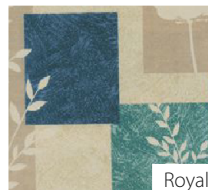
Non-Woven: 100% flame retardant polyester
modified with molecular antimicrobial and
liquid repellent technologies.



Iris



Grain



Royal

DORCHESTER

Width: 57" (145cm) fabric

Repeat: 13.58" (34.49cm) H

Shown: Vertically Seamed

Non-Woven: 100% flame retardant polyester
modified with molecular antimicrobial and
liquid repellent technologies.



Beach Glass



Sterling



Mocassin



Sonora

CUBICLE CURTAINS + TRACK

ELEGANT LEAF

Width: 54" (137.16cm) fabric
Repeat: 26.2" (66.55cm) H x 25.2" (64cm) V
Shown: Vertically Seamed
Non-Woven: 100% flame retardant polyester modified with molecular antimicrobial and liquid repellent technologies.



Rich Ivory



Basil



Point Blue

FUSION

Width: 57" (145cm) fabric
Repeat: 8.9" (22.61cm) H x 8.4" (21.32) V
Shown: Vertically Seamed
Non-Woven: 100% flame retardant polyester modified with molecular antimicrobial and liquid repellent technologies.



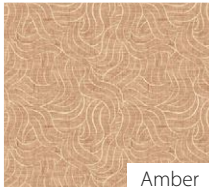
Fountain



Cloud



Truffle



Amber

GENTRY

Width: 57" (145cm) fabric
Repeat: 13.46" (34.19cm) H x 12.59" (31.98cm)V
Shown: Vertically Seamed
Non-Woven: 100% flame retardant polyester modified with molecular antimicrobial and liquid repellent technologies.



Sonora



Ocean

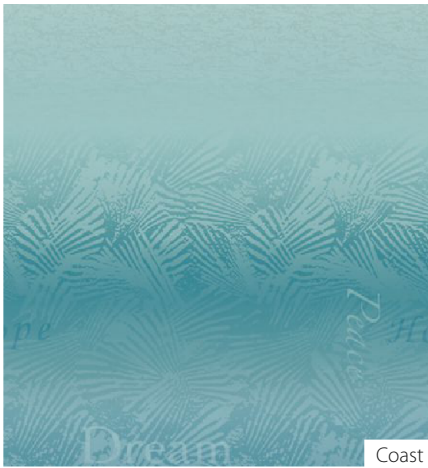
INSPIRE

Width: 72" (182.88cm) fabric

Repeat: 25" (63.5cm)H x
72" (182.88cm)V

Shown: Railroaded

Non-Woven: 100% flame retardant polyester
modified with molecular antimicrobial and
liquid repellent technologies.



Coast



Seaglass



Shell



Beach

KENSINGTON

Width: 57" (145cm) fabric

Repeat: 6.3" (16cm) V

Shown: Vertically Seamed

Non-Woven: 100% flame retardant polyester
modified with molecular antimicrobial and
liquid repellent technologies.



Sand



Natural



Toffee



Serenity



Sapphire

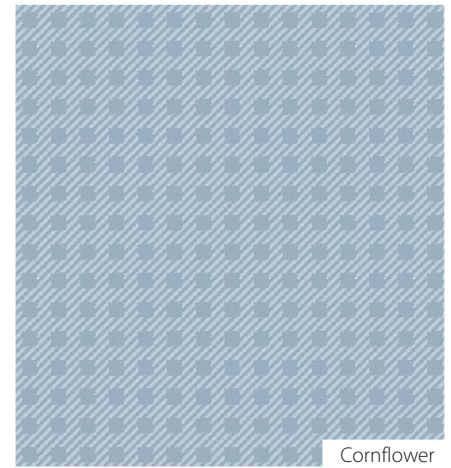
LANCASTER

Width: 54" (137.16cm) fabric

Repeat: 1" (2.54cm) H x 1" (2.54cm) V

Shown: Vertically Seamed

Non-Woven: 100% flame retardant polyester
modified with molecular antimicrobial and
liquid repellent technologies.



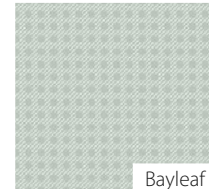
Cornflower



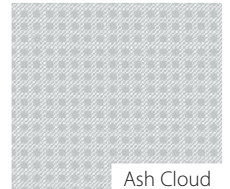
Cream



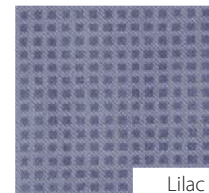
Downy



Bayleaf



Ash Cloud



Lilac

LEA

Width: 72" (182.88cm) fabric
Repeat: 25.2"(64cm)H x 72"(182.88cm)V
Shown: Railroaded
Non-Woven: 100% flame retardant polyester modified with molecular antimicrobial and liquid repellent technologies.



Harvest



Strawberry



Wheat



Meadow

MAYFAIR

Width: 57" (145cm) fabric
Repeat: 26.25" (66.68cm) H x 25.2" (64cm) V
Shown: Vertically Seamed
Non-Woven: 100% flame retardant polyester modified with molecular antimicrobial and liquid repellent technologies.



Alpine



Autumn



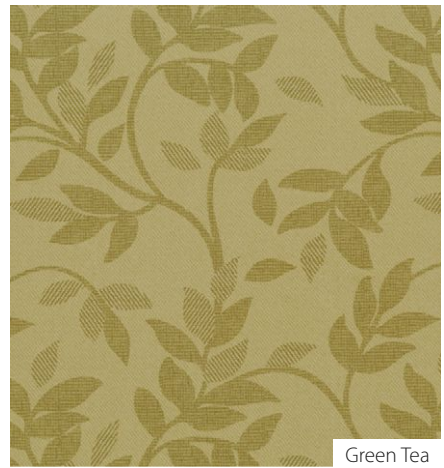
Denim



Cocoa

NOTTINGHAM

Width: 57" (145cm) fabric
Repeat: 8.97" (22.78cm) H x 8.26" (20.98cm) V
Shown: Vertically Seamed
Non-Woven: 100% flame retardant polyester modified with molecular antimicrobial and liquid repellent technologies.



Green Tea



Biscotti



Palomino



Plum

OVATION

Width: 72" (182.88cm) fabric

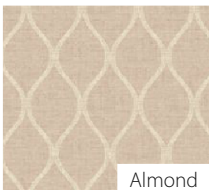
Repeat: 14" (35.56cm) H x
25" (63.5cm) V

Shown: Railroaded

Non-Woven: 100% flame retardant polyester
modified with molecular antimicrobial and
liquid repellent technologies.



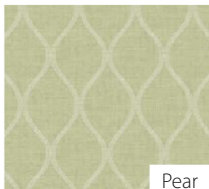
Azure



Almond



Toast



Pear

RAPIDS

Width: 72" (182.88cm) fabric

Repeat: 25.2" (64cm) H x 72" (182.88cm) V

Shown: Railroaded

Non-Woven: 100% flame retardant polyester
modified with molecular antimicrobial and
liquid repellent technologies.



Lagoon



Cashew



Pecan



Rust

RIPPLE

Width: 72" (182.88cm) fabric

Repeat: 25.2" (64cm) H x 72" (182.88cm) V

Shown: Railroaded

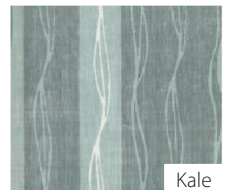
Non-Woven: 100% flame retardant polyester
modified with molecular antimicrobial and
liquid repellent technologies.



Stone



Dune



Kale



Shore

CUBICLE CURTAINS + TRACK

THICKET

Width: 72" (182.88cm) fabric
Repeat: 25" (63.5cm) H x 21" (53.34cm)V
Shown: Railroaded
Non-Woven: 100% flame retardant polyester modified with molecular antimicrobial and liquid repellent technologies.



Caribou



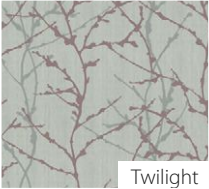
Flax



Dawn



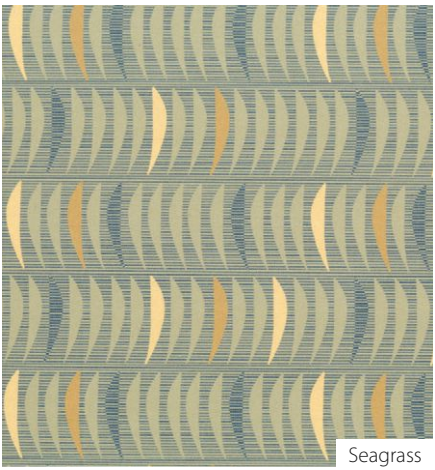
Stream



Twilight

TUDOR

Width: 57" (145cm) fabric
Repeat: 13.46" (34.19cm) H x 4" (10.16cm)V
Shown: Vertically Seamed
Non-Woven: 100% flame retardant polyester modified with molecular antimicrobial and liquid repellent technologies.



Seagrass



Moccasin



Sand Dune

PLATINUM FABRIC COLLECTION



NEW! REFLECTION

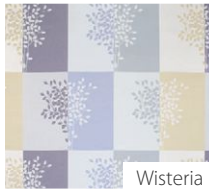
Width: 72" (182.88cm) fabric
Repeat: 33.5" (85.09cm) H x 28.25" (71.76cm) V
Shown: Railroaded
Woven: 60% Solution-Dyed Polyester, 40% FR Polyester



Nougat



Bud



Wisteria



Honeysuckle



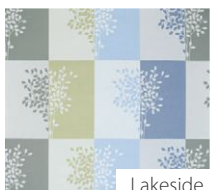
Fawn



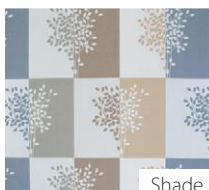
Creamsicle



Promenade



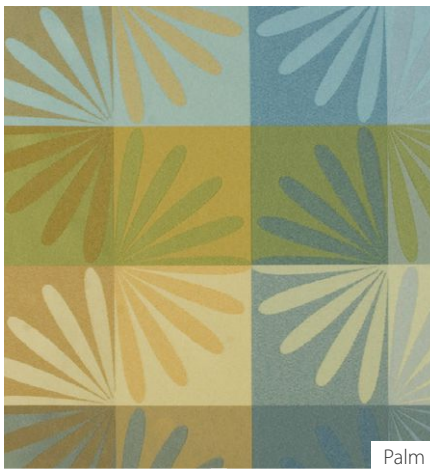
Lakeside



Shade

ALFRESCO

Width: 74" (188cm) fabric
Repeat: 18" (45.72cm) H x 18" (45.72cm) V
Shown: Vertically Seamed
Woven: 52% Post-Consumer Recycled FR Polyester, 48% FR Polyester



Palm



Nectar



Ginger



Spice



Dune



Orchid



Bluegrass

AUDUBON

Width: 72" (182.88cm) fabric
Repeat: 28" (71.12cm) H x 76" (193.04cm) V
Shown: Vertically Seamed
Woven: 100% Trevira CS Polyester



Blossom



Bulb



Floret



Petal



Pollen



Seed



Stem



Leaf



Nectar



Root



Denotes a Sustainable Fabric

use for bedspreads, cubicle curtains, shower curtains + window treatments



All fabrics are Fire Rated

BLISSFUL

Width: 71" (180.34cm) fabric
Repeat: 10.5" (26.67cm) H x 14" (35.56cm) V
Shown: Railroaded
Woven: 100% Trevira CS Polyester

BOULEVARD

Width: 72" (182.88cm) fabric
Repeat: 17.5" (44.45cm) H x 0" V
Shown: Railroaded
Woven: 100% Trevira CS Polyester

COLORBLOCK

Width: 72" (182.88cm) fabric
Repeat: 49" (124cm) H x 0" (0cm) V
Shown: Railroaded
Woven: 60% Solution-dyed Polyester, 40% FR Polyester



Aster



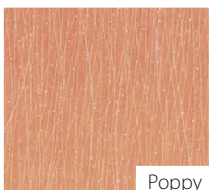
Spa



Reveal



Jasmine



Poppy



Lido



Wasabi



Vista



Haven



Petunia



Topiary



Horizon



Wisteria



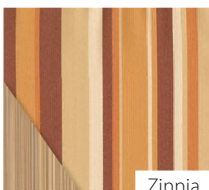
Eventide



Distant



Meadow



Zinnia

CUBICLE CURTAINS + TRACK

EVOLUTION

Width: 72" (182.88cm) fabric
Repeat: 72" (182.88cm) H x 3.125" (7.94cm) V
Shown: Vertically Seamed
Woven: 50% Trevira CS Bioactive Polyester, 50% Polyester

GREENGUARD Certified.

GRADUAL

Width: 72" (182.88cm) fabric
Repeat: 0" (0cm) H x 80" (203.2cm) V
Shown: Vertically Seamed
Woven: 100% Trevira CS Polyester

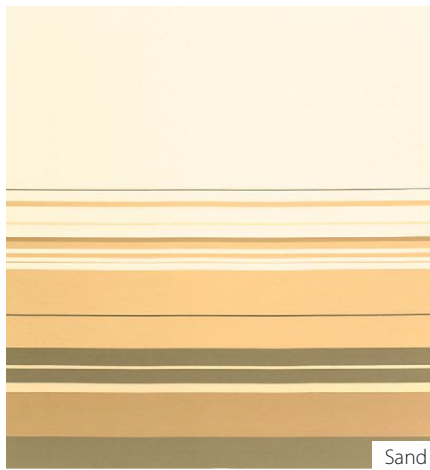
HERITAGE

Width: 72" (182.88cm) fabric
Repeat: 14" (35.56cm) H x 12.5" (31.75cm) V
Shown: Vertically Seamed
Woven: 100% Eco Intelligent™ Polyester

GREENGUARD Certified.



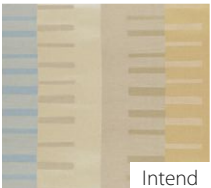
Fossil



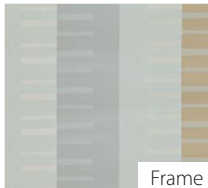
Sand



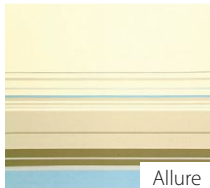
Willow



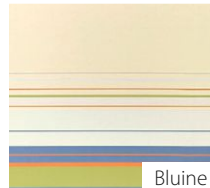
Intend



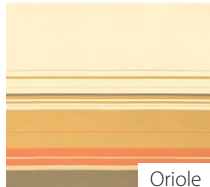
Frame



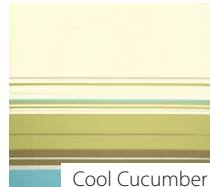
Allure



Bluine



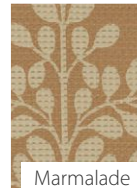
Oriole



Cool Cucumber



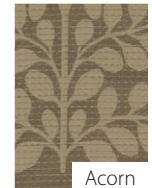
Ultra Violet



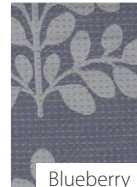
Marmalade



Orchard



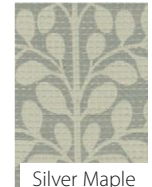
Acorn



Blueberry



Honeysuckle



Silver Maple



Palm



Denotes a Sustainable Fabric

use for bedspreads, cubicle curtains, shower curtains + window treatments



All fabrics are Fire Rated

INTERVAL

Width: 72" (182.88cm) fabric
Repeat: 55.75" (141.61cm) H x 72" (182.88cm) V
Shown: Railroaded
Woven: 100% Trevira CS Polyester

MESA

Width: 74" (187.96cm) fabric
Repeat: 37" (93.98cm) H x 36" (91.44cm) V
Shown: Vertically Seamed
Woven: 52% Post-Consumer Recycled FR Polyester, 48% FR Polyester



RIVERSTONE 2

Width: 72" (182.88cm) fabric
Repeat: 17" (43cm) H x 15" (38cm) V
Shown: Vertically Seamed
Woven: 60% Solution-Dyed Polyester, 40% FR Polyester

GREENGUARD Certified.



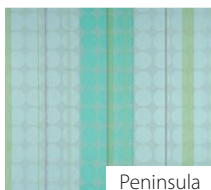
Botanic



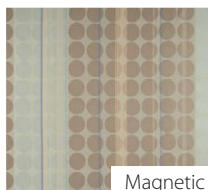
Sea Breeze



Oasis



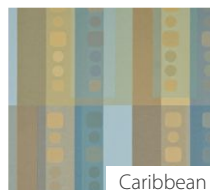
Peninsula



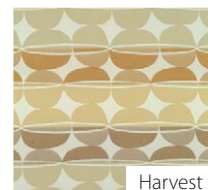
Magnetic



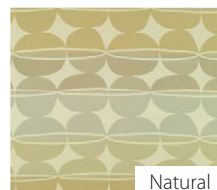
Siesta



Caribbean



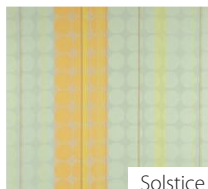
Harvest



Natural



Canyon



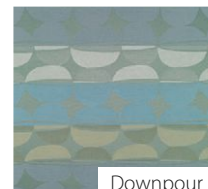
Solstice



Spring



Morning Glory



Downpour



Ravine



Adobe



Ginger



Dune

CUBICLE CURTAINS + TRACK



Denotes a Sustainable Fabric

use for bedspreads, cubicle curtains, shower curtains + window treatments



All fabrics are Fire Rated

SUNSET

Width: 74" (187.96cm) fabric
Repeat: 99" (251.46cm) H x 74" (187.96cm) V
Shown: Railroaded
Woven: 57% Polyester, 43% FR Polyester

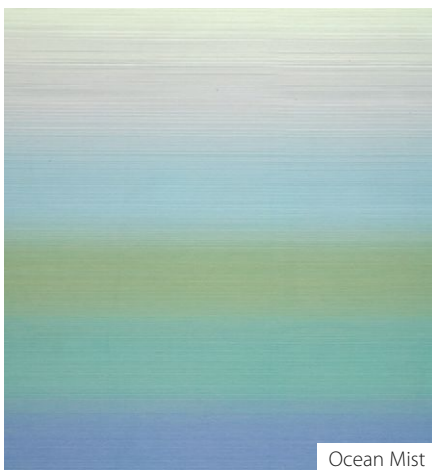
GREENGUARD Certified.



Shindig

TRANSFORM

Width: 72" (182.88cm) fabric
Repeat: 0" (0cm) H x 81" (205.74cm) V
Shown: Vertically Seamed
Woven: 100% Trevira CS Polyester



Ocean Mist

VINERY

Width: 72" (182.88cm) fabric
Repeat: 24.5" (62cm) H x 26" (66cm) V
Shown: Vertically Seamed
Woven: 45% Polyester, 28% Post-Consumer Recycled Polyester, 27% Post Industrial Recycled Polyester

GREENGUARD Certified.



Aegean



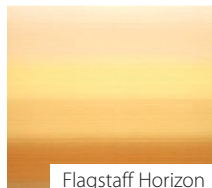
Ballroom



Creamsicle



Emerald Sea



Flagstaff Horizon



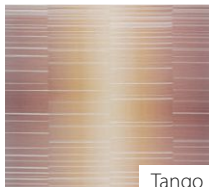
Glow



Poolside



Jazzy



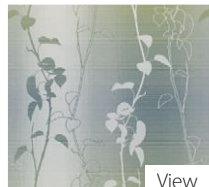
Tango



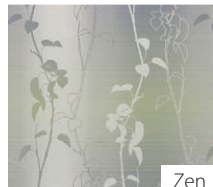
Purple Rain



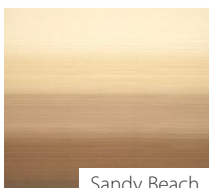
Rising Sun



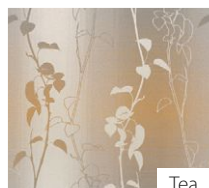
View



Zen



Sandy Beach



Tea

GOLD

FABRIC COLLECTION

CUBICLE CURTAINS + TRACK



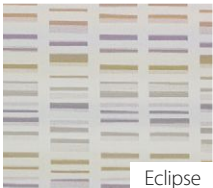
NEW! SEQUENCE

Width: 72" (182.88cm) fabric
Repeat: 14.625" (37.15cm) H x 20" (50.8cm) V
Shown: Vertically Seamed
Woven: 46% Polyester, 27% Post Consumer Recycled Polyester, 27% Post Industrial Recycled Polyester

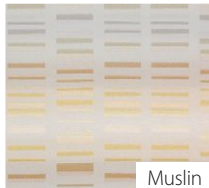
GREENGUARD Certified.



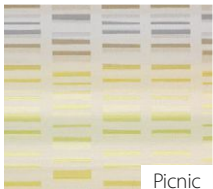
Canyon



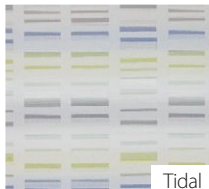
Eclipse



Muslin



Picnic

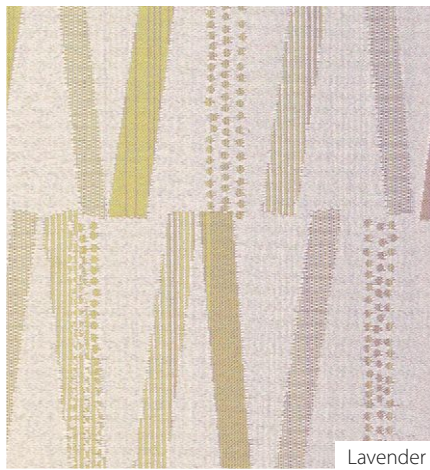


Tidal

NEW! INCLINATION

Width: 72" (182.88cm) fabric
Repeat: 16.75" (42.55cm) H x 16.376" (41.6cm) V
Shown: Railroaded
Woven: 55% Recycled Polyester (28% post, 27% Pre-Consumer), 45% FR Polyester

GREENGUARD Certified.



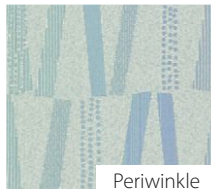
Lavender



Marigold



Oasis



Periwinkle



Sandstone



Turquoise

BOONDOCKS

Width: 74" (187.96cm) fabric
Repeat: 14.5" (36.83)H x 74" (187.96cm) V
Shown: Railroaded
Woven: 57% Polyester; 43% FR Polyester



Thistle



Grassland



Isle



Wheat



Denotes a Sustainable Fabric

use for bedspreads, cubicle curtains, shower curtains + window treatments



All fabrics are Fire Rated

DAISY

Width: 72" (182.88cm) fabric
Repeat: 37" (94cm) H x 38.625" (98.1cm) V
Shown: Railroaded
Woven: 100% Trevira FR Polyester

GREENGUARD Certified.

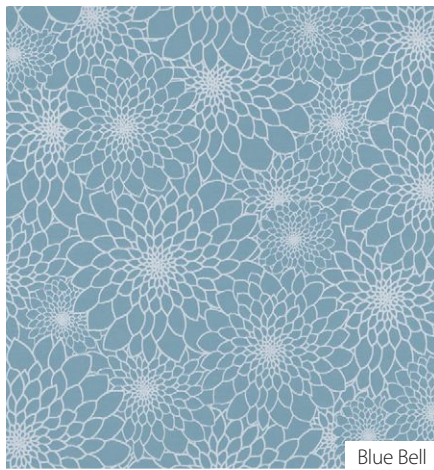
ILLUMINATE

Width: 72" (182.88cm) fabric
Repeat: 70.5" (179cm) H x 72" (182.88cm) V
Shown: Railroaded
Woven: 60% Solution-Dyed Polyester, 40% FR Polyester

GREENGUARD Certified.

INCOGNITO

Width: 74" (187.96cm) fabric
Repeat: 86" (218.44cm) H x 74" (187.96cm) V
Shown: Railroaded
Woven: 57% Polyester, 43% FR Polyester



Blue Bell



Skyline



Dolphin



Linen



Sesame



Bale



Bounty



Dragonfly



Giraffe



Honey Wheat



Sienna



Watershed



Alfalfa



Grasshopper



Starfish



Driftwood



Citrine



Koala



Butterfly

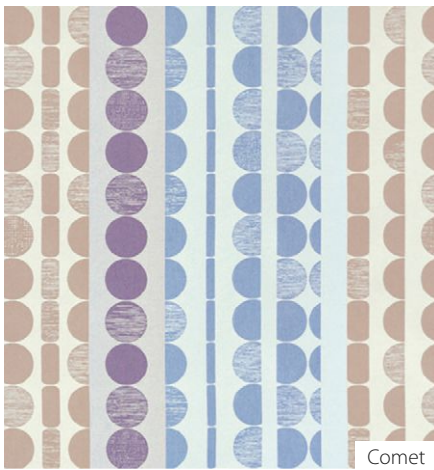


Seafoam

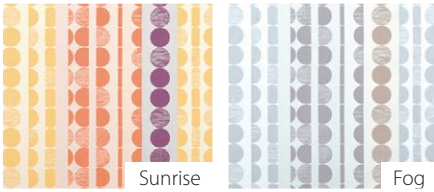
CUBICLE CURTAINS + TRACK

ISLAND

Width: 72" (182.88cm) fabric
Repeat: 24.25" (61.6cm) H x 18.75" (47.63) V
Shown: Railroaded
Woven: 100% FR Polyester



Comet



Sunrise

Fog



Agave

Blue Nile



Cocoa

IN THE GROOVE

Width: 74" (187.96cm) fabric
Repeat: 9" (22.86cm) H x 2.375" (6cm) V
Shown: Railroaded
Woven: 61% Post Consumer Recycled FR Polyester, 27% Polyester, 12% FR Polyester

GREENGUARD Certified.



Lilac



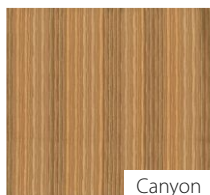
Blush

Linen



Gaia

Rain



Canyon

IN THE MOMENT

Width: 74" (187.96cm) fabric
Repeat: 13.5" (34.29cm) H x 18.25" (46.36cm) V
Shown: Vertically Seamed
Woven: 61% Post Consumer Recycled FR Polyester, 27% Polyester, 12% FR Polyester

GREENGUARD Certified.



Lilac



Blush

Linen



Gaia

Rain



Canyon



Denotes a Sustainable Fabric

use for bedspreads, cubicle curtains, shower curtains + window treatments



All fabrics are Fire Rated

REVOLVE

Width: 72" (182.88) fabric
Repeat: 13.5" (34.29cm) H x 12" (30.48cm) V
Shown: Railroaded
Woven: 60% Trevira FR Polyester, 40% Recycled Polyester

Revolve is treated with an antimicrobial agent that inhibits and controls bacteria and mildew growth.

SUN PRAIRIE 2

Width: 72" (182.88cm) fabric
Repeat: 11.75" (29.85cm) H x 13" (33.02cm) V
Shown: Railroaded
Woven: 60% Solution-Dyed Polyester, 40% FR Polyester

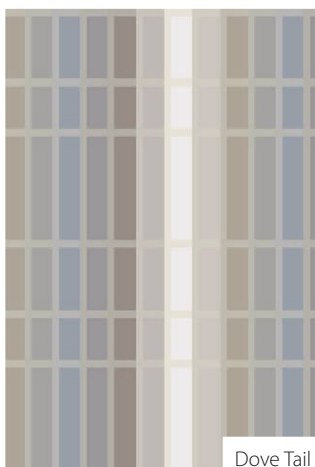
GREENGUARD Certified.

TANGLED

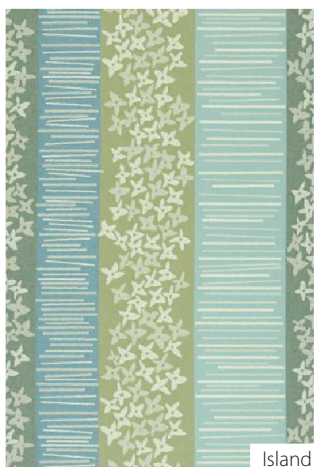
Width: 72" (182.88cm) fabric
Repeat: 18.875" (47.94) H x 13.75" (34.93) V
Shown: Vertically Seamed
Woven: 54% Polyester, 46% FR Polyester

WHITNEY

Width: 72" (182.88cm) fabric
Repeat: 18.5" (47cm) H x 11.375" (28.89cm) V
Shown: Railroaded
Woven: 100% Trevira FR Polyester



Dove Tail



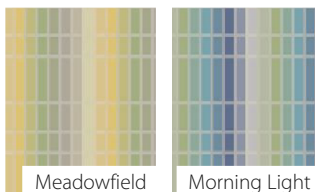
Island



Lunar



Juniper



Meadowfield

Morning Light



Chai

Driftwood



Raffia

Linen



Cobblestone

Maize



Driftwood

Rose Dusk



Cantaloupe

Gully

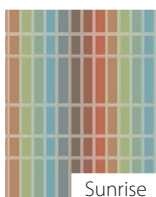


Basket

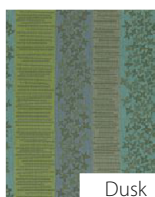


Amber

Wood Acre



Sunrise



Dusk



Rain Tree

Bayleaf



Palm

Niagara

CUBICLE CURTAINS + TRACK

SILVER
FABRIC COLLECTION





Denotes a Sustainable Fabric

use for bedspreads, cubicle curtains, shower curtains + window treatments



All fabrics are Fire Rated

NEW! CANYON

Width: 72" (182.88cm) fabric
Repeat: 18.8" (47.75cm) H x 32.3" (82.04cm) V
Shown: Vertically Seamed
Woven: 50% post-consumer Recycled Polyester, 50% FR Polyester with Antimicrobial Properties

Canyon is treated with an antimicrobial agent that inhibits and controls mold and mildew growth.



NEW! OPTIC

Width: 72" (182.88cm) fabric
Repeat: 37" (93.98cm) H x 36" (91.44cm) V
Shown: Vertically Seamed
Woven: 100% Polyester, Antimicrobial and VISA finish

Visa® finish resists stains so dirt and discoloration disappear after washing.

Optic is treated with an antimicrobial agent that inhibits and controls mold and mildew growth.

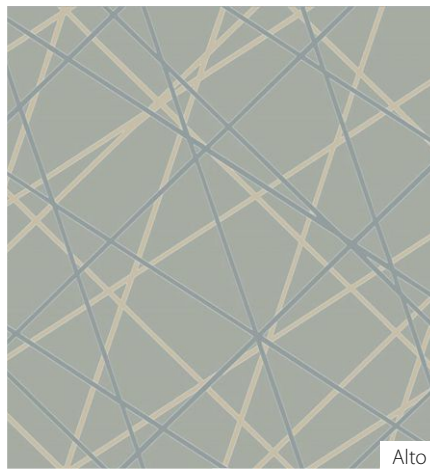
FOSSIL

Width: 72" (182.88cm) fabric
Repeat: 13" (33.02cm) H x 15.25" (38.74cm) V
Shown: Vertically Seamed
Woven: 100% Polyester

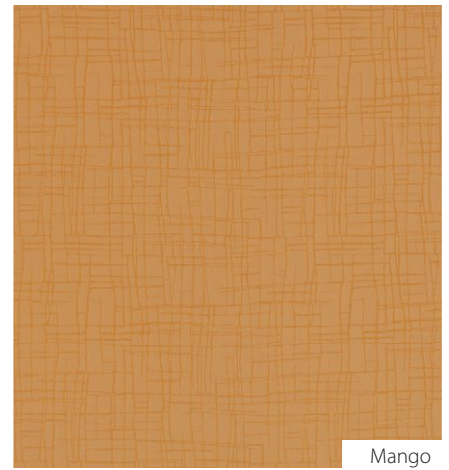
Fossil is treated with an antimicrobial agent that inhibits and controls bacteria and mildew growth.



Spring



Alto



Mango



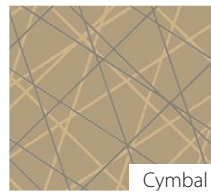
Night Sky



Stream



Breeze



Cymbal



Earth



Autumn



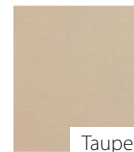
Mercury



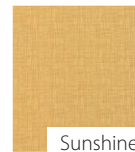
Tissot



Wheat



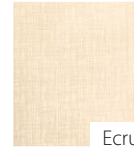
Taupe



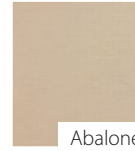
Sunshine



Green Tea



Ecru



Abalone



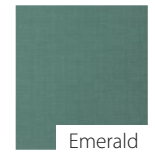
Lavender



Periwinkle



Turquoise



Emerald



Sky Blue



Ocean

CUBICLE CURTAINS + TRACK

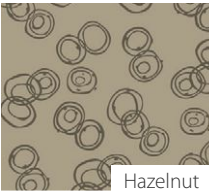
GALAXY

Width: 72" (182.88cm) fabric
Repeat: 24" (61cm) H x 24" (61cm) V
Shown: Railroaded
Woven: 100% Polyester, Antimicrobial and VISA finish

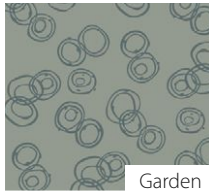
*Visa® finish resists stains so dirt and discoloration disappear after washing.
 Galaxy is treated with an antimicrobial agent that inhibits and controls mold and mildew growth.*



Desert



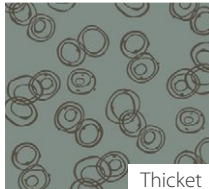
Hazelnut



Garden



Leaf

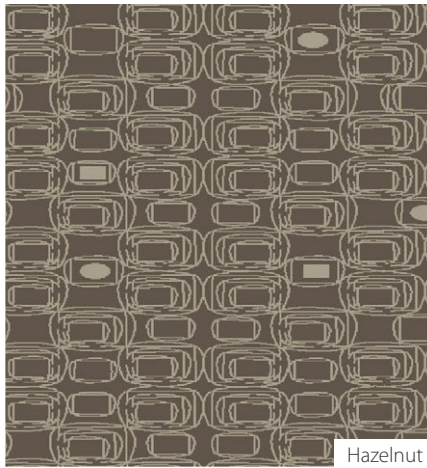


Thicket

GRAVITY

Width: 72" (182.88cm) fabric
Repeat: 23.25" (59.06cm) H x 24" (60.96cm) V
Shown: Railroaded
Woven: 100% Polyester, Antimicrobial and VISA finish

*Visa® finish resists stains so dirt and discoloration disappear after washing.
 Gravity is treated with an antimicrobial agent that inhibits and controls mold and mildew growth.*



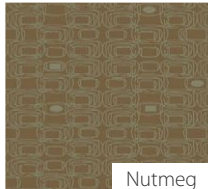
Hazelnut



Desert



Leaf



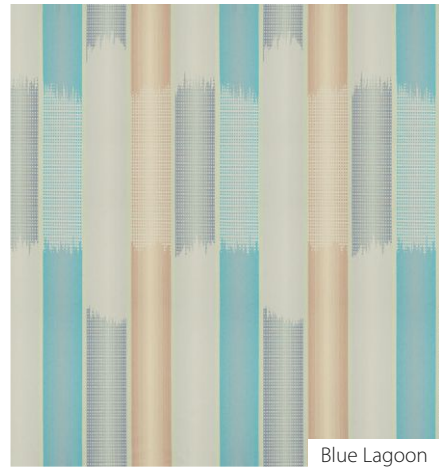
Nutmeg



Garden

LATTICE

Width: 72" (182.88cm) fabric
Repeat: 28.5" (72.39) H x 72.75" (184.79cm) V
Shown: Railroaded
Woven: 58% Recycled Polyester (29% post-consumer, 29% pre-consumer), 42% Polyester



Blue Lagoon



South Beach



Cloudy Day



Autumn Sunset



Lavender Surprise



Denotes a Sustainable Fabric

use for bedspreads, cubicle curtains, shower curtains + window treatments



All fabrics are Fire Rated

LINEAGE

Width: 72" (182.88cm) fabric
Repeat: 7" (17.78cm) H x 14.5" (36.83) V
Shown: Vertically Seamed
Woven: 100% Flame Resistant Polyester

PEBBLES

Width: 72" (182.88cm) fabric
Repeat: 13" (33.02cm) H x 10.25" (26.04cm) V
Shown: Railroaded
Woven: 100% Polyester FR Blend, Antimicrobial Finish

GREENGUARD Certified.

SCENIC

Width: 72" (182.88cm) fabric
Repeat: 12" (30.48cm) H x 12" (30.48cm) V
Shown: Vertically Seamed
Woven: 100% Polyester, Antimicrobial and VISA finish

Visa® finish resists stains so dirt and discoloration disappear after washing.

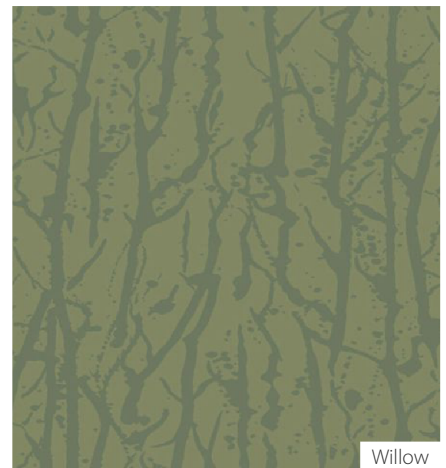
Scenic is treated with an antimicrobial agent that inhibits and controls mold and mildew growth.



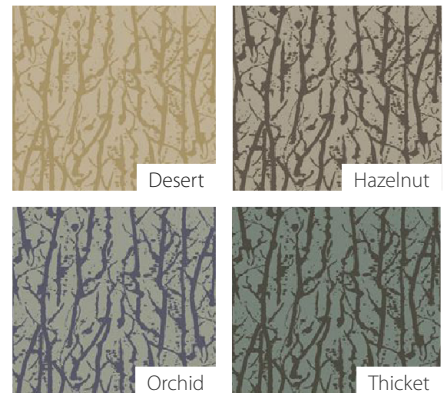
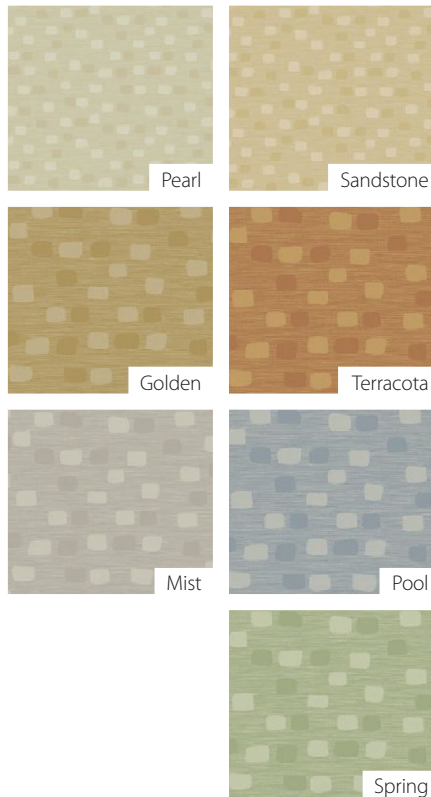
Butter



Tranquil Teal



Willow



CUBICLE CURTAINS + TRACK



Denotes a Sustainable Fabric

use for bedspreads, cubicle curtains, shower curtains + window treatments



All fabrics are Fire Rated

SHANTY

Width: 72" (182.88cm) fabric
Repeat: 18.9" (48cm)H x 20.8" (52.83cm) V
Shown: Vertically Seamed
Woven: 100% Polyester FR Blend

TERRACE

Width: 80" (203.2cm) fabric
Repeat: 14.5" (36.83cm) H x 27" (68.58cm) V
Shown: Railroaded
Woven: 100% FR Polyester

WILD IVY

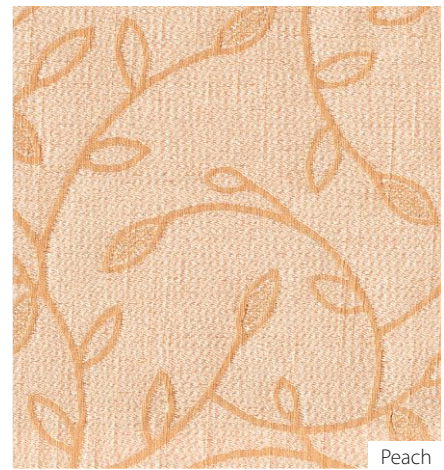
Width: 80" (203.2cm) fabric
Repeat: 7" (17.78cm) H x 10" (25.4) V
Shown: Railroaded
Woven: 100% FR Polyester



Dusk



Lilac



Peach



Driftwood



Sunset



Beige



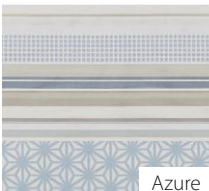
Dark Blue



Blue Silver



Dark Blue



Azure



Medium Green



Deep Green



Light Blue



Lilac



Sky Blue



Medium Blue



Light Green



Taupe



Teal Blue



CUBICLE CURTAINS + TRACK

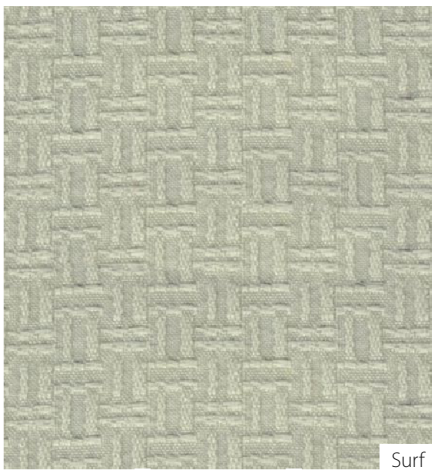
BRONZE

FABRIC COLLECTION

BOARDWALK

Width: 72" (182.88cm) fabric
Repeat: .63" (1.6cm) H x .5" (1.27cm) V
Shown: Railroaded
Woven: 100% Polyester, Antimicrobial and Visa® Finish

*Visa® finish resists stains so dirt and discoloration disappear after washing.
 Boardwalk fabric is treated with an antimicrobial agent that inhibits and controls mold and mildew growth.*



Surf



FLORENCE

Width: 72" (182.88cm) fabric
Repeat: 7" (17.78cm) H x 6.5" (16.51cm) V
Shown: Railroaded
Woven: 100% Polyester, Antimicrobial and Visa® Finish

*Visa® finish resists stains so dirt and discoloration disappear after washing.
 Florence fabric is treated with an antimicrobial agent that inhibits and controls mold and mildew growth.*



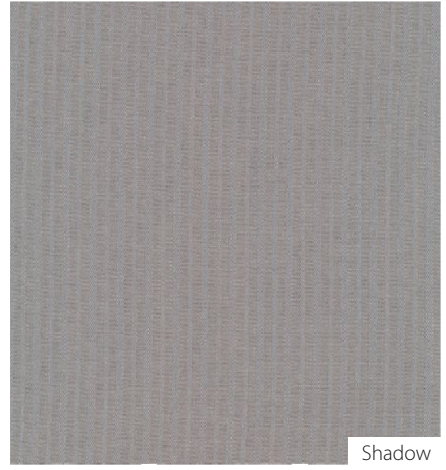
Caramel



MADISON

Width: 72" (182.88cm) fabric
Repeat: 1" (3cm) H x 0" (0cm) V
Shown: Vertically Seamed
Woven: 52% Repreve® Post-Consumer Polyester, 48% Polyester

*Visa® finish resists stains so dirt and discoloration disappear after washing.
 Madison fabric is treated with an antimicrobial agent that inhibits and controls mold and mildew growth.*



Shadow





Denotes a Sustainable Fabric

use for bedspreads, cubicle curtains, shower curtains + window treatments



All fabrics are Fire Rated

ORBITZ

Width: 72" (182.88cm) fabric
Repeat: 0" (0cm) H x 0" (0cm) V
Shown: Railroaded
Woven: 100% Polyester with Antimicrobial Finish

Orbitz fabric is treated with an antimicrobial agent that inhibits and controls mold and mildew growth.

PATIO

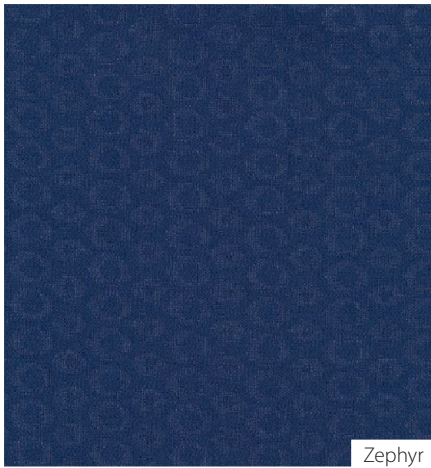
Width: 70/72" (177.8/182.88cm) fabric
Repeat: 2.625" (6.67cm) H x 2" (5.08cm) V
Shown: Railroaded
Woven: 100% Polyester, Inherently FR

Patio fabric is treated with an antimicrobial agent that inhibits and controls mold and mildew growth.

SIMPLICITY

Width: 72" (182.88cm) fabric
Repeat: 0" (0cm) H x 0" (0cm) V
Shown: Railroaded
Woven: 100% Polyester, FR, Antimicrobial and Visa® Finish

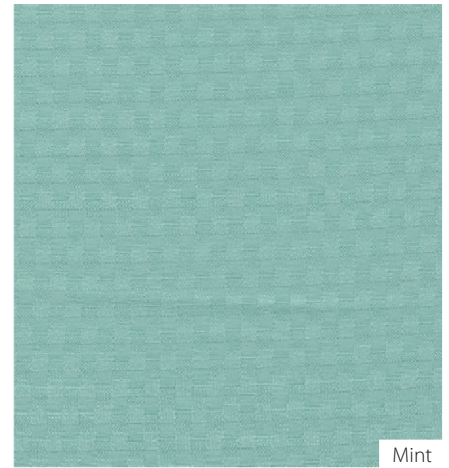
*Visa® finish resists stains so dirt and discoloration disappear after washing.
Simplicity fabric is treated with an antimicrobial agent that inhibits and controls mold and mildew growth.*



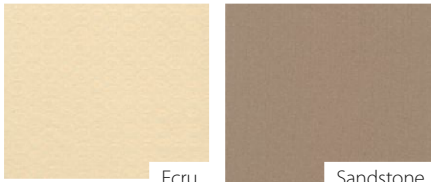
Zephyr



Denim

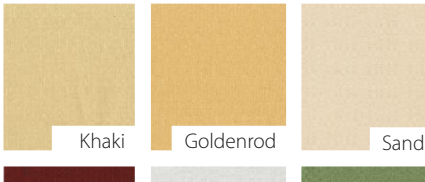


Mint



Eccru

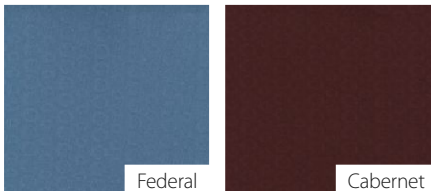
Sandstone



Khaki

Goldenrod

Sand



Federal

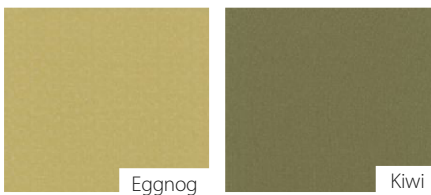
Cabernet



Bordeaux

Parchment

Leaf



Eggnog

Kiwi



Spa Blue

Ocean

Stone



Mocha

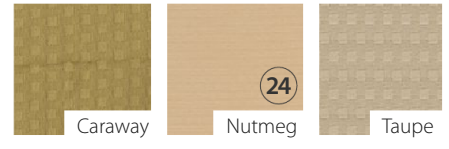


24

Natural

Buff

Cookie



Caraway

24

Nutmeg

Taupe



Raffia

Penny

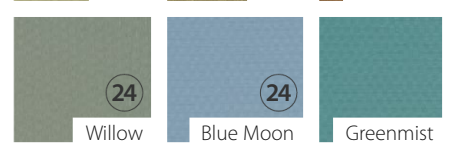
Spa



Palm

Kiwi

Chestnut



24

Willow

24

Blue Moon

Greenmist



Delft

CUBICLE CURTAINS + TRACK



Denotes a Sustainable Fabric

use for bedspreads, cubicle curtains, shower curtains + window treatments

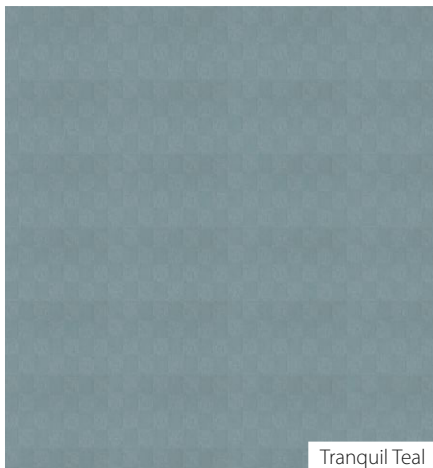


All fabrics are Fire Rated

TIC TAC

Width: 72" (182.88cm) fabric
Repeat: 1" (2.54cm) H x 1" (2.54cm) V
Shown: Railroaded
Woven: 100% Polyester, FR, Antimicrobial Finish

Tic Tac fabric is treated with an antimicrobial agent that inhibits and controls mold and mildew growth.



Tranquil Teal



Alabaster

Egg Cream

Camel

Ivory

Sand

Adobe

Silver Fox

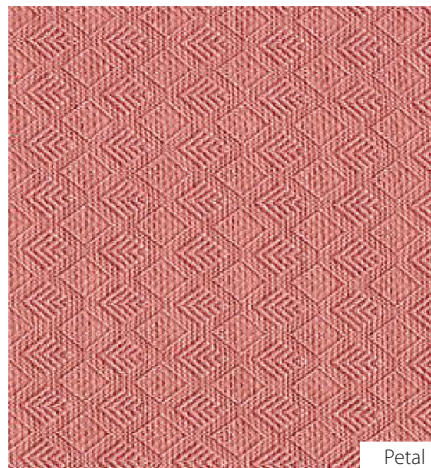
Green House

Blue Water

WINDSOR

Width: 72" (182.88cm) fabric
Repeat: .5625" (1.43cm) H x .625" (1.59cm) V
Shown: Railroaded
Woven: 100% Polyester, FR, Antimicrobial and Visa® Finish

*Visa® finish resists stains so dirt and discoloration disappear after washing.
Honeycomb fabric is treated with an antimicrobial agent that inhibits and controls mold and mildew growth.*



Petal



Linen

Sand

Oatmeal

Cork

Iron

Maple

Gull

Harvest

Malt

Pearl

Officer

Pacific

Kiwi

Gull

Fern

Eggplant

Copen

Marine

Spruce




CUBICLE CURTAINS + TRACK

DIM OUT

FABRIC COLLECTION

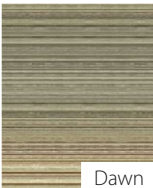
CAMBRIDGE

Width: 54" (137cm) fabric
Repeat: 15.75" (40cm) H x 27" (69cm) V
Shown: Vertically Seamed
Woven: 100% Polyester FR
Feature: Room darkening fabric printed on Vespers 98% Dim Out base cloth.

 Denotes a Sustainable Fabric



Toffee



Dawn




Autumn

KOZMO

Width: 54" (137.16cm) fabric
Repeat: 13" (33.02cm) H x 27" (68.58cm) V
Shown: Vertically Seamed
Woven: 55% Recycled Polyester, 45% Polyester FR
Feature: Room darkening fabric printed on Greenway base cloth.

Kozmo is treated with an antimicrobial agent that inhibits and controls mold and mildew growth.

 Denotes a Sustainable Fabric



Pewter



Tiger Eye



Wasabi



Bourbon

MIDNIGHT

Width: 59" (149.86cm) fabric
Repeat: 0" (0cm) V
Shown: Vertically Seamed
Woven: 100% FR Polyester

Midnight fabric is used to help block light or further darken rooms in sensitive areas, such as conference rooms, eye clinics, recovery rooms or critical care areas. When cubicle curtain is used with a valance, darker colors provide up to 98% room darkening and lighter colors offer 85% room darkening.





Raspberry



Harvest



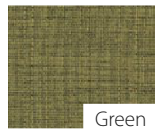
Mushroom



Blue



Khaki



Green



Terracotta



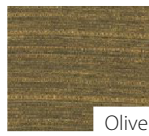
Wheat



Maize



Slate



Olive



Beige



Spice



Charcoal

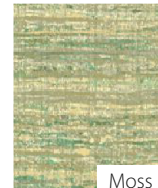
MONET

Width: 54" (137cm) fabric
Repeat: 0" (0cm) H x 0" (0cm) V
Shown: Vertically Seamed
Woven: 100% Polyester FR
Feature: Room darkening fabric printed on Vespers 98% Dim Out base cloth.

 Denotes a Sustainable Fabric



Citron



Moss



Jute



Glacier



use for cubicle curtains + window treatments



All fabrics are Fire Rated

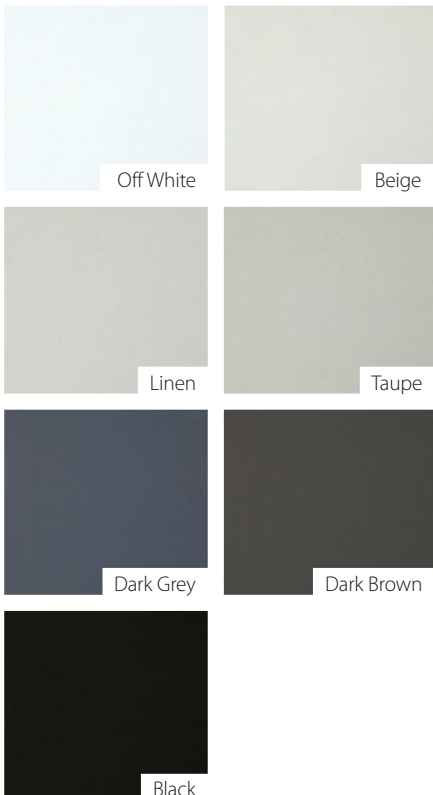
SERENE

Width: 58" (147.3cm) fabric
Repeat: 0" (0cm) H x 0"(0cm) V
Shown: Vertically Seamed
Woven: 100% FR Polyester
Feature: Room Darkening Fabric 98% opacity

Denotes a Sustainable Fabric



Light Grey



SHADOW

Width: 54" (137.16cm) fabric
Repeat: 0" (0cm) V
Shown: Vertically Seamed
Woven: 100% Inherently Flame Resistant Polyester

Shadow fabric is used to help block light or further darken rooms in sensitive areas, such as conference rooms, eye clinics, recovery rooms or critical care areas. When cubicle curtain is used with a valance, darker colors provide up to 98% room darkening and lighter colors offer 85% room darkening. Passes NFPA 701 Small Scale testing.



Dreamscape



BLACK-OUT VALANCE

If you're looking for an option to completely blackout your space, we have a blackout valance available. Using our Serene or Shadow fabrics, we can customize a valance for the space between the curtain and ceiling. It can be easily attached to the track giving you the option to take it down in instances where you want the little extra light.



CUBICLE CURTAINS + TRACK



inpro®

INTERIOR AND EXTERIOR
ARCHITECTURAL PRODUCTS

2017

• **IPC®**
DOOR + WALL PROTECTION SYSTEMS

• **CLICKEZE®**
PRIVACY SYSTEMS

• **SIGNSCAPE®**
ARCHITECTURAL SIGNAGE

• **ENDURANT®**
WASHROOM SYSTEMS

• **JOINTMASTER®**
EXPANSION JOINT SYSTEMS

• **INPRO® INTERIORS**
FACTORY DIRECT INSTALLATION

• **ASCEND®**
ELEVATOR PROTECTION SYSTEMS

Inprocorp.com • 800.222.5556 • 262.679.9010 • World Headquarters S80 W18766 Apollo Drive, Muskego, WI 53150 USA



Printed with soy ink on recycled fiber including 10% post-consumer fiber.



©2017 Inpro Corporation