

Mills[®] Partitions

Distinctive style. Superior durability.



Bradmar™ Solid Plastic
Stainless Steel
Fusion™ Granite

Powder Coated
Phenolic Core

BRADLEYCORP.COM



Mills® Partitions

Offering a wide selection of the most innovative product materials available, Mills partitions are suited for a variety of applications and environments. The quality materials used provide key features to architects and specifiers, such as aesthetic appeal, vandal resistance, low cost and warranties. From high-performance material options to creative style solutions, Mills partitions provide architects smart, economical choices.

Materials

Bradley has the largest green product offering of restroom partition materials. Most are GREENGUARD Certified as low emitting materials. Our 100% post-consumer recycled content HDPE material in the Bradmar line is made entirely of recycled milk jugs. On average, each stall keeps more than 1600 milk jugs out of landfills.



Stainless Steel

Pg 4, 12

40% pre-consumer, 25% post-consumer recycled stainless steel.

- Heavy traffic

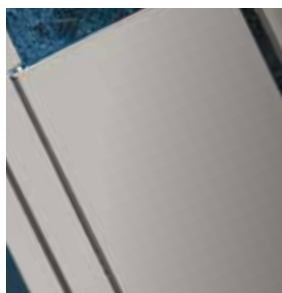


Powder Coated

Pg 6, 12

25% pre-consumer.

- Moderate traffic



Bradmar™ Solid Plastic

Pg 8, 12

30% pre-consumer, 100% pre-consumer or 100% post-consumer recycled high density polyethylene (HDPE).

- Heavy traffic



Phenolic Core

Pg 10, 12

20% pre-consumer recycled phenolic core.

- Heavy traffic



Fusion Granite & Stainless Steel

Pg 11, 12

Natural granite partition panels, pilasters and urinal screens, and stainless steel or powder coated doors.

- Heavy traffic

Mounting Styles

Bradley's wide variety of partition mounting styles meet the design needs of every application, from airports and sports entertainment complexes to restaurants, fitness centers and schools. Whether easy maintenance, economy, durability, added support, design aesthetic or "all of the above" are driving the decision, Mills offers a style most suited to your building's restrooms.

Sentinel™ Floor-Mounted, Overhead Braced Series 400

This partition style provides the most economical solution for heavy traffic and vandalism-prone areas. Because it requires no special floor or ceiling construction, installation is easy in new construction or existing buildings. The anti-grip head rail provides outstanding rigidity.



Floor-Braced Series 500

Floor-braced partitions complement design with functional performance.

Recommended for buildings with high ceilings, it enhances the effect of spaciousness. A minimum three inch concrete floor for anchoring is required. This style not available in Bradmar solid plastic or Fusion.



Ceiling Hung Series 600

Ceiling hung partitions are ideal for areas with low ceilings. Offering an area free from obstruction to allow for fast and easy maintenance, the system requires structural supports in the ceiling for maximum rigidity. Not recommended for ceiling heights over eight feet. Not available in Bradmar solid plastic or Fusion.

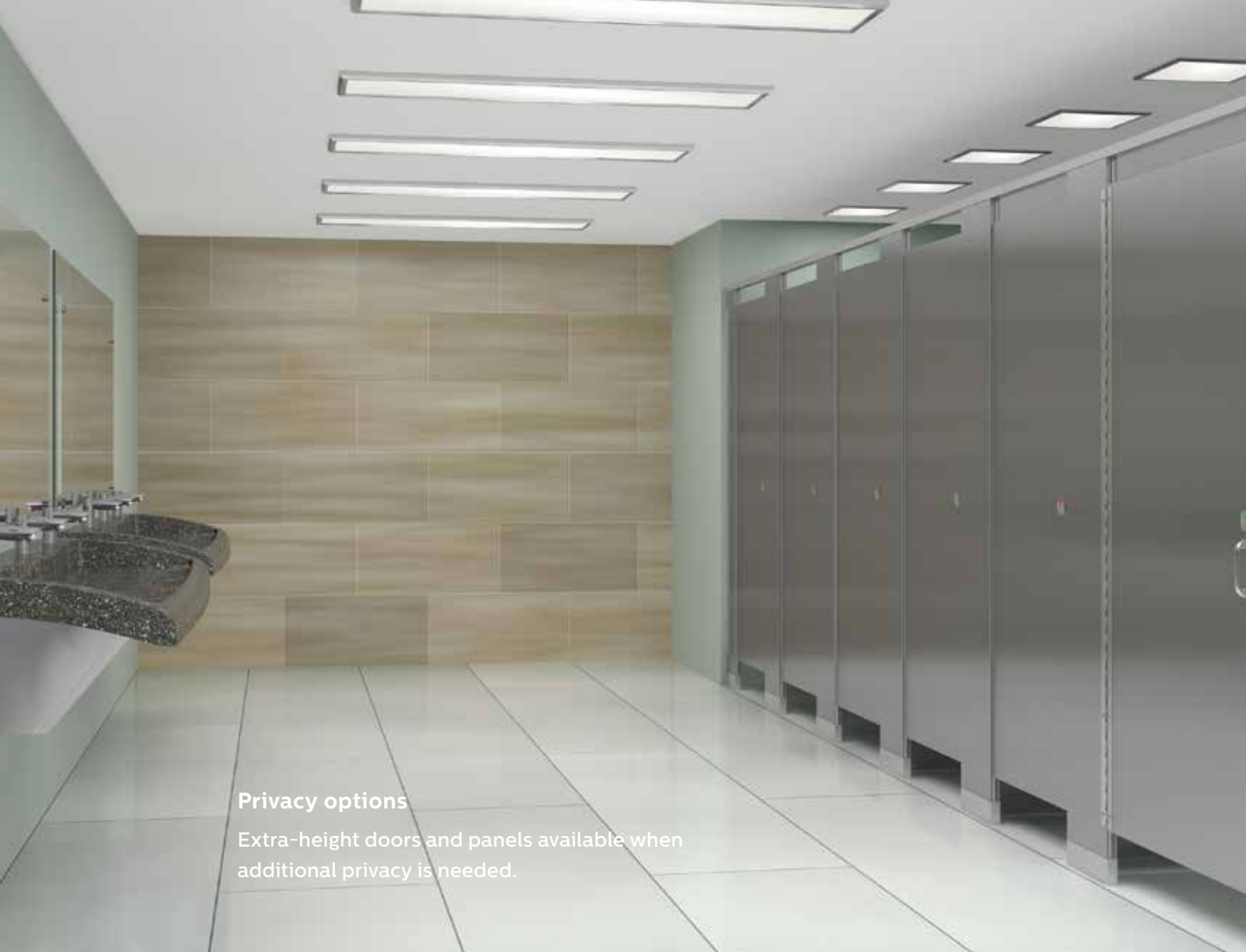


Floor-to-Ceiling Series 700

This style works well where additional support is required.

Anchored at the floor and ceiling. Offers the most stability. Not available in Fusion.





Privacy options

Extra-height doors and panels available when additional privacy is needed.

Stainless Steel

Mills takes this popular look to the limit with seamless panels.

- Facing sheets of panels and doors integrally locked together. Corners are welded smooth or adhered with a corner clip
- The Permaseal™ design is stronger than conventional crown molding construction
- Extra-height doors and panels available when additional privacy is needed
- The finish wraps completely around the edges
- GREENGUARD Gold Certified

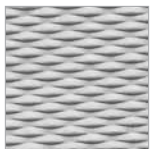




Stainless Steel Textures



Satin



5WL Textured

The Permaseal™ Edge

Mills' exclusive Permaseal edge is available in Stainless Steel or Powder Coated (see pg 6).

The Permaseal design locks facing metal sheets integrally together around the perimeter of the panel.

- 15-year warranty against rust-out – best in the industry.
- No moisture penetration
- No rust



A palette of 15 rich colors and a wide variety of styles at a lean price meet virtually any design need.



Powder Coated

This quality powder coated finish combined with the exclusive Permaseal™ design makes Mills the best high value metal partition system available.

- State-of-the-art paint system offers 15 rich colors
- Extra-height doors and panels available when additional privacy is needed
- Durable powder coated finish allows for years of long-lasting beauty
- GREENGUARD Certified as a low emitting material

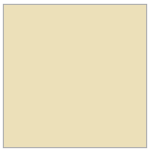




Powder Coated Colors



Adaptive Shade
(7053)



Almond
(2103)



Black
(0250)



Buff
(1029)



Burgundy
(0410)



Carnival Red
(2145)



Cyberspace
(7076)



Dove Gray
(2125)



Dusk Gray
(0177)



Glacier Blue
(0550)



Polo Green
(0386)



Royal Blue
(0260)



Toffee
(8517)



Warm Gray
(0412)



White
(0750)

Due to printing variances, the actual material color may differ. Contact your local Bradley Representative for samples.



Bradmar™ Solid Plastic

Bradmar Partitions, Urinal and Sight Screens and Shower Dividers are fabricated from 30% pre-consumer, 100% pre-consumer or 100% post-consumer recycled high density polyethylene (HDPE). A variety of color options provides many design options.

- Low maintenance and high vandal resistance
- Withstands wet and humid environments
- Ideal for schools, theme parks, stadiums and arenas – any high-traffic restroom
- 15-year warranty – one of the industry’s best
- GREENGUARD Certified as a low emitting material



Privacy options

Extra-height doors and panels available when additional privacy is needed.

Bradmar 30% Pre-consumer Colors

					
Beige (S202)	Burgundy (S211)	Buttermilk (M226)	Canyon Granite (M244)	Charcoal Gray (S215)	Deep Blue (S203)
					
Desert Stone (S406)	Gray (S200)	Linen (M242)	Starry Night (S225)	Toffee (M227)	

Due to printing variances, the actual material color may differ. Contact your local Bradley Representative for samples.

No Site™ partitions

Bradley offers No Site™ style partitions in Bradmar with no gap between the doors and pilasters to ensure privacy. Traditional stalls can have up to a 0.5" (1.3 cm) gap, leaving an uncomfortable "site" line.

- No gaps ensure privacy
- Extra-height doors and panels available when additional privacy is needed
- Available in floor-mounted, overhead braced and floor-to-ceiling mounting styles

Integral hinge system

Hidden with the door cavity, this design combines the strength of HDPE with a 1/2" (13mm) two-piece nylon cam-action pin and 3/16" (5mm) stainless steel pin for the ultimate in reliability.

No gaps
between doors
and pilasters

Bradmar 100% Post-consumer Colors



Black
(M258)



Charcoal Gray
(M248)



Toffee
(M247)

Bradmar 100% Pre-consumer Color



Black
(R205)



Privacy options

Extra-height doors and panels available when additional privacy is needed.

Phenolic Core

Its impact resistance and superior strength are a result of high heat and high-pressure molding of solid phenolic core material with a decorative melamine surface.

- Resists water, oil and bacteria
- Withstands wet and humid environments
- Extra-height doors and panels available when additional privacy is needed
- Perfect for high traffic areas
- GREENGUARD Certified as a low emitting material



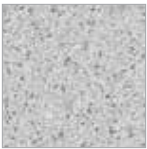
Phenolic Colors



Almond
(0920)



Earth Wash
(062F)



Folkstone Celesta
(012F)



Graphite Grafix
(006F)



Natural Canvas
(7022)



Navy Grafix
(7018)

*Woodgrain color available at additional charge.

Fusion Granite & Stainless Steel

Looking for a new design twist? Bradley's Fusion partitions offer a combination of granite partition panels, pilasters and urinal screens, and stainless steel or powder coated doors.

- Decorative high-end commercial partitions
- Natural granite partition panels, pilasters and urinal screens
- Stainless doors and hardware (stainless steel textures pg 5)
- Stainless doors GREENGUARD Certified as low emitting material
- Doors also available in powder coated (colors pg 6-7)
- Floor-mounted overhead-braced only



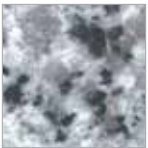
Fusion Colors



Pine Green



Golden Garnet



Luna Pearl



Tropical Brown



Due to printing variances, the actual material color may differ. Contact your local Bradley Representative for samples.

	Mounting Style Series	Traffic	Vandal Resistance	Environment	Aesthetics	Applications	Warranty
Powder Coated	400	Moderate	<ul style="list-style-type: none"> Finish susceptible to graffiti and scratches Durable Impact resistant 	<ul style="list-style-type: none"> Moderate 	<ul style="list-style-type: none"> 15 standard colors High quality gloss finish Edges: Permaseal 	<ul style="list-style-type: none"> Schools Office buildings Restaurants Religious facilities 	<ul style="list-style-type: none"> 15 years: against rust-out 5 years: chrome plated Zamac hardware Lifetime of partition: Stainless Steel Hardware
	500						
	600						
	700						
Phenolic Core	400	Heavy	<ul style="list-style-type: none"> Highly durable Scratches repairable with laminate fill products Heavy-duty stainless steel hardware is standard 	<ul style="list-style-type: none"> Dry Moderate Humid Wet 	<ul style="list-style-type: none"> Most standard Formica® or Wilsonart® color or pattern Edges: Solid black 	<ul style="list-style-type: none"> Outdoor facilities Parks Pools Shower rooms 	<ul style="list-style-type: none"> 3 years against delamination and discoloration Lifetime of partition: Stainless Steel Hardware
	500						
	600						
	700						
Bradmar	400	Heavy	<ul style="list-style-type: none"> Graffiti easily wiped away with ordinary cleaners Dent-proof 	<ul style="list-style-type: none"> Dry Moderate Humid Wet 	<ul style="list-style-type: none"> 15 standard colors Aluminum brackets Stainless steel shoes 	<ul style="list-style-type: none"> Schools Parks Retail 	<ul style="list-style-type: none"> 15 years Lifetime of partition: Stainless Steel Hardware
	700						
Stainless Steel	400	Heavy	<ul style="list-style-type: none"> Textured patterns resist scratches Buffing removes scratches from brushed finish 	<ul style="list-style-type: none"> Dry Moderate 	<ul style="list-style-type: none"> Satin brushed 5WL textured Textured or pattern wraps around edges Edges: Permaseal 	<ul style="list-style-type: none"> Airports Stadiums Public rest stops 	<ul style="list-style-type: none"> 15 years against rust-out 5 years: chrome plated Zamac hardware Lifetime of partition: Stainless Steel Hardware
	500						
	600						
	700						
Fusion	400	Heavy	<ul style="list-style-type: none"> Granite: extremely stain- and scratch-resistant Stainless steel: Buffing removes scratches from brushed finish 	<ul style="list-style-type: none"> Dry Moderate 	<ul style="list-style-type: none"> Granite and Stainless steel 	<ul style="list-style-type: none"> Boutiques & high-end retail spaces Hotels & casinos Galleries & art museums Restaurants Offices 	<ul style="list-style-type: none"> 15 years Lifetime of partition: Stainless Steel Hardware

Visit bradleycorp.com for more information and technical documents.

Contact your Bradley Rep for samples.

+1 262 251 6000
 800 BRADLEY bradleycorp.com
 W142 N9101 Fountain Boulevard
 Menomonee Falls, WI USA 53051
 3788-4.5-0216

